

Central and Western Africa Exploration



19th Western Africa Oil/Gas
& Energy Conference 2013

Introducing ERHC Energy Inc.

- Valuable E&P assets in Sub-Saharan Africa
- Incorporated in Colorado and based in Texas, USA
- Publicly traded on the U.S. Over the Counter Bulletin Board (OTCBB) – ERHE.OB
- Market cap: ±\$50 million – April 2013

Brief History

- Through 2009
 - Primary focus on deepwater JDZ assets
 - Unexpected results from drilling in the JDZ
- 2010 – Awarded two Blocks in Sao Tome & Principe EEZ
- 2011 – Awarded three Blocks in Republic of Chad
- 2012 – Awarded Kenya Block 11A

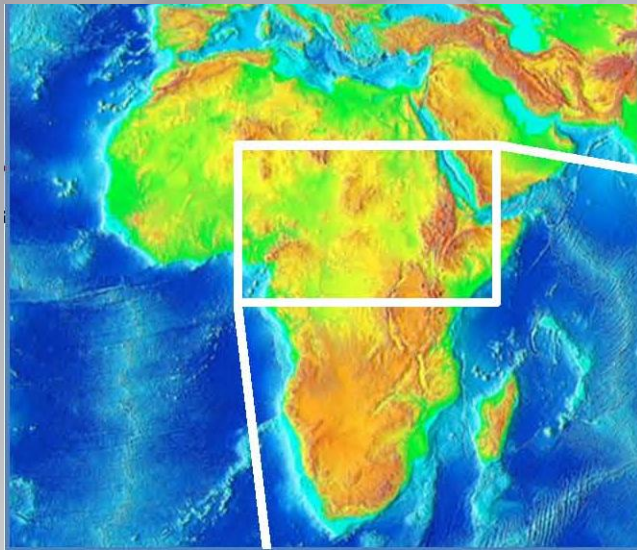
Uniqueness of ERHC

- Home field advantage
 - Management and board connected with the region
 - Significant investment by African business interests
- Proven ability of securing quality assets
- Proven record of attracting technically and financially capable strategic partners

Exploration Strategy: African Rift Play

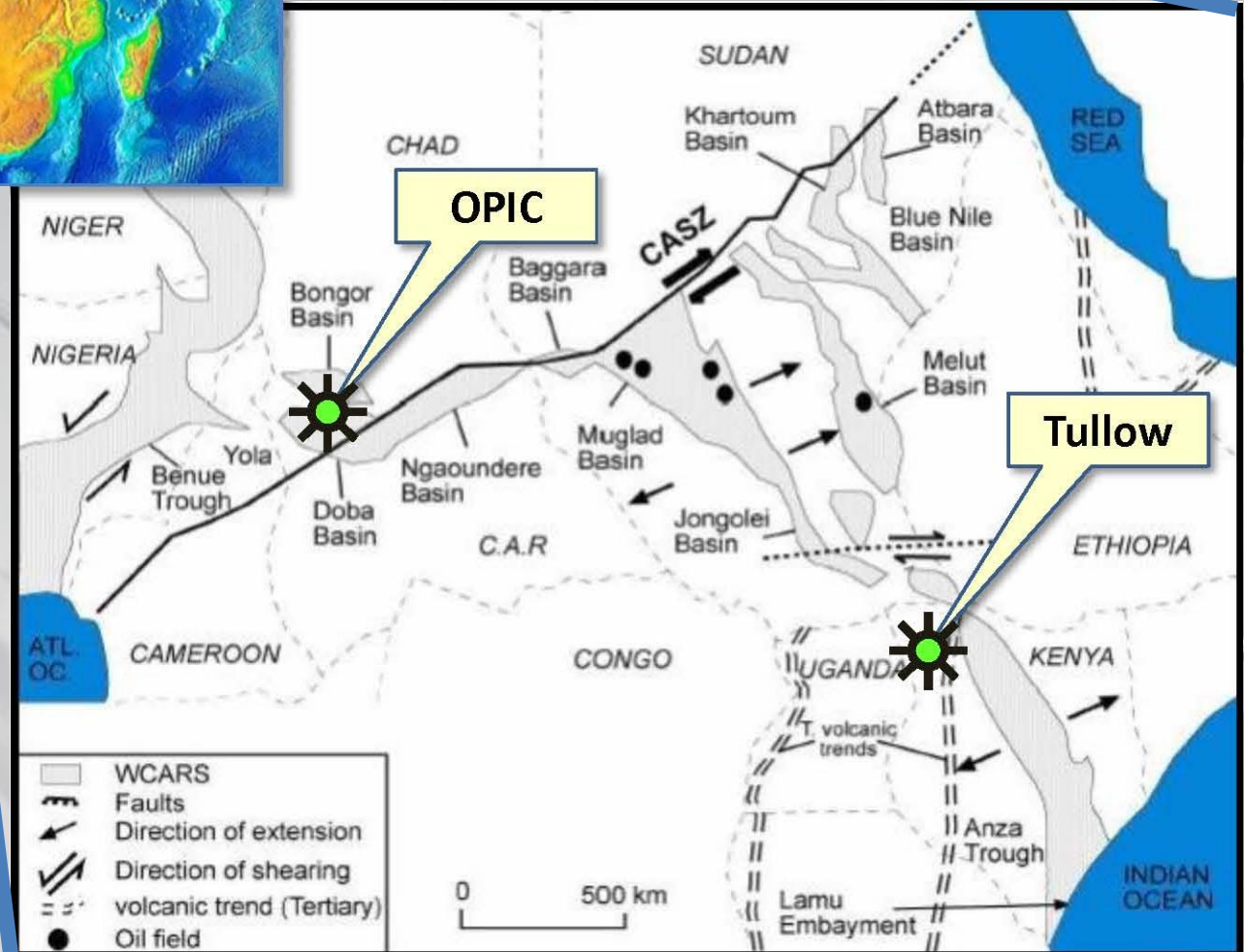


African Rift Play

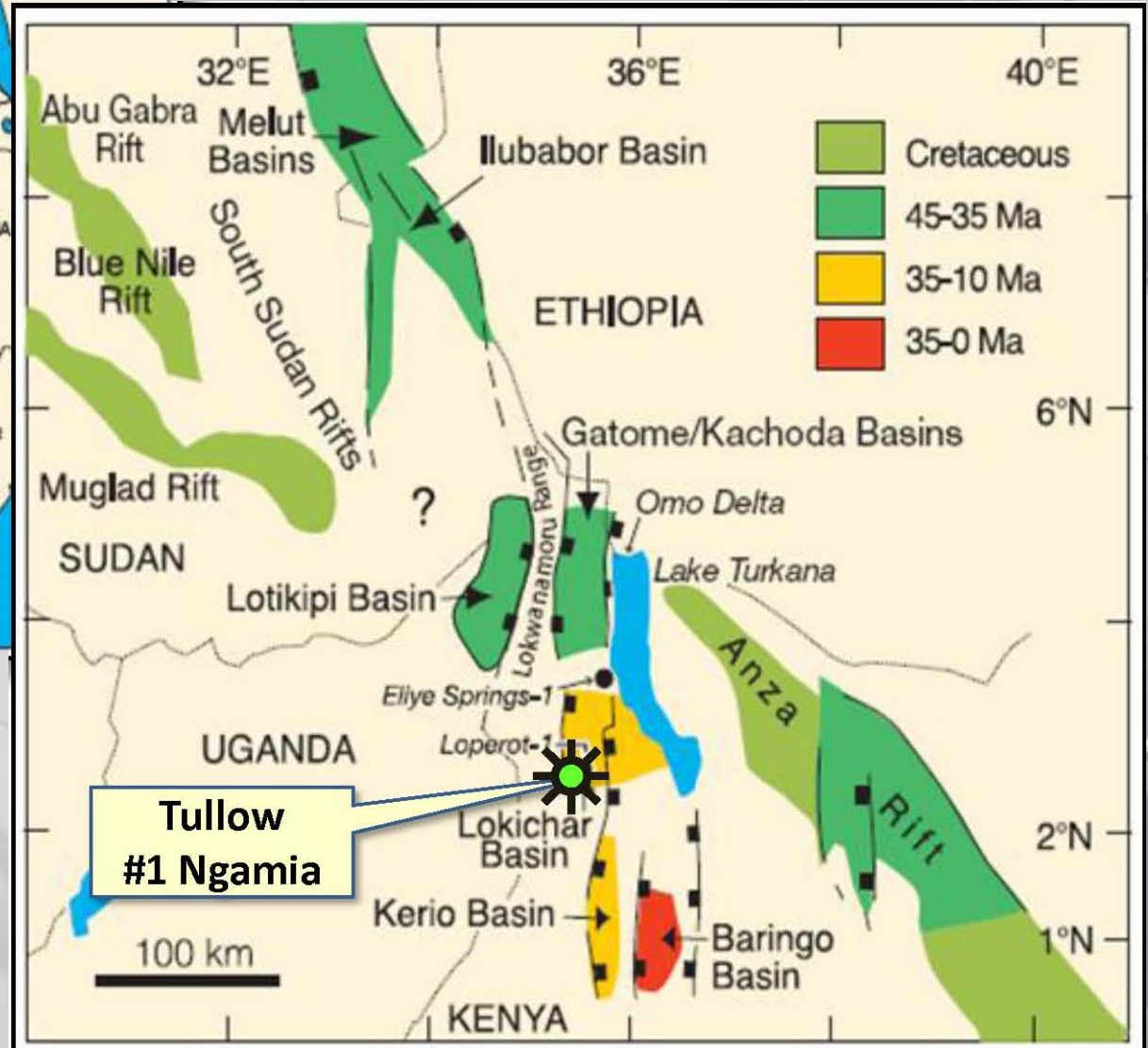


The African Rift Play is one of the hottest trends in global oil exploration.

Recent discoveries include Tullow's #1 Ngamia in Kenya and OPIC's #1 Benoy in Chad.



African Rift Play



The trend consists of numerous basins and an associated complex fault system

Republic of Chad



Republic of Chad

•Proven Reserves are 1.5 Billion Bbls

Source International Petroleum Encyclopedia

•Undeveloped Discoveries are 2.6 Billion Bbls, and 14.6 TCF of Gas

Source USGS, World Petroleum Resources Project

Niger

CNPC largest player
Current Production: ~17,000 bbl/d
Unconfirmed EUR: 1.0 Blnbbl
Continue to explore

Ndjamena Refinery

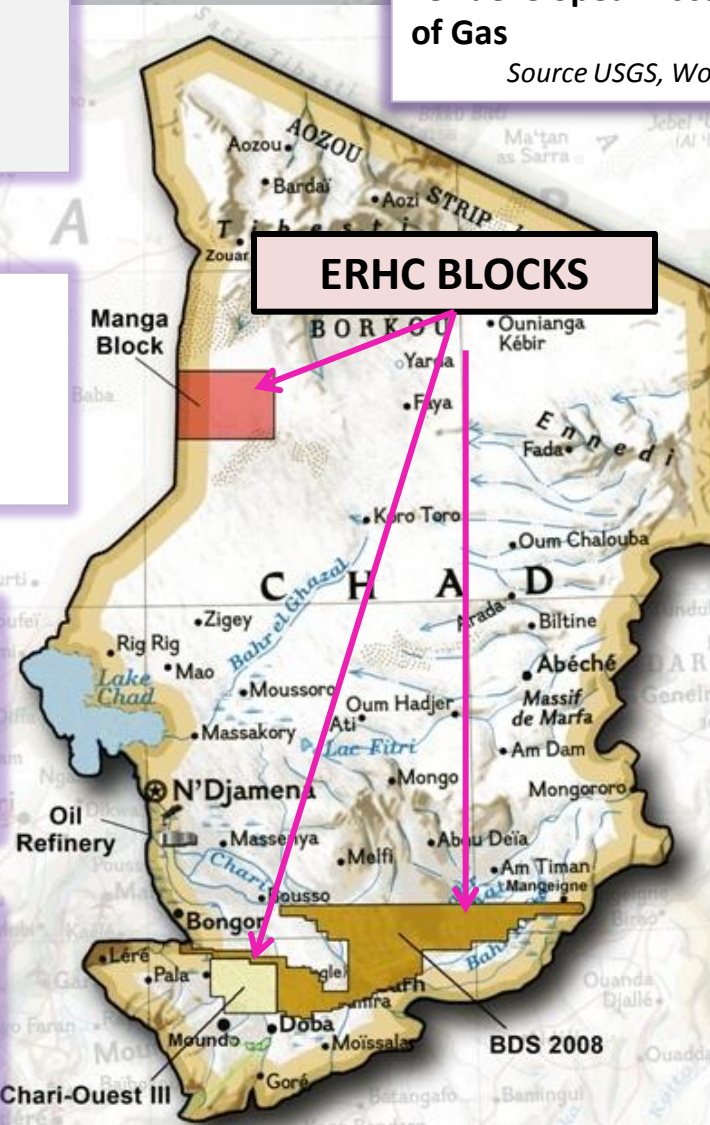
Operator: CNPC
Capacity: 20,000 bbl/d expandable to 60,000 bbl/d
Online Date: June 2011
Supply: Block H Area II (CNPC)

Block H Area II

Operator: CNPC (Former EnCana)
Expected Production: ~17,000 bbl/d
Reserves (remaining): 85 MMbbl
OOIP: 700 mmbbl (CNPC)
Continue to explore

Chari Ouest - Doba Basin

Operator: Exxon (Esso)
Current Production: 115,000 bbl/d
Peak Production: 220,000 (2004)
Reserves (remaining): 462 MMbbl
EUR: 795 mmbbl



Sudan All Fields

Key Operators: CNPC & Consortiums
Current Production: 465,000 bbl/d
Peak Production: 538,000 bbl/d (2011)
Reserves (remaining): 1.96 Bln bbls
EUR: 3.0 Bln bbls
Key basins: Muglad, Melut
Wells Drilled: 300
Commercial & Technical Success: 60%

Greater Nile Oil Project

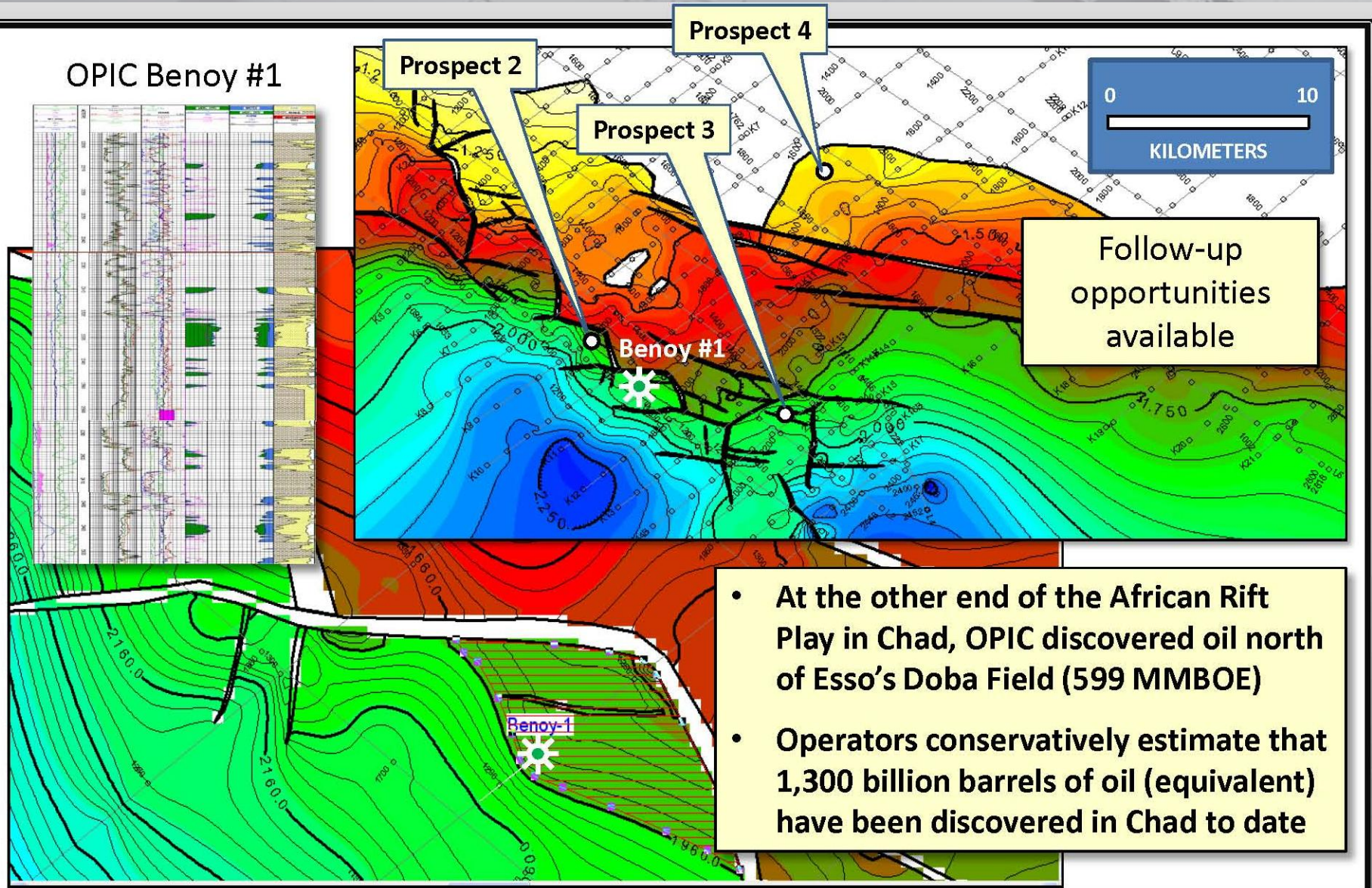
Operator: GNPOC (Formerly Arakis)
Current Production: 203,000 bbl/d
Peak Production: 300,000 bbl/d (2004)
Reserves (remaining): 662 MMbbl
EUR: 1.49 Bln bbl

Chad/Cameroon Pipeline

Operator: Exxon
Capacity: 225,000 bbl/d
Utilization: 115,000 bbl/d
Distance: 1,070 km
Port: Cameroon loading
Expandable by adding pump stations

Opic Benoy #1 Discovery, Chad

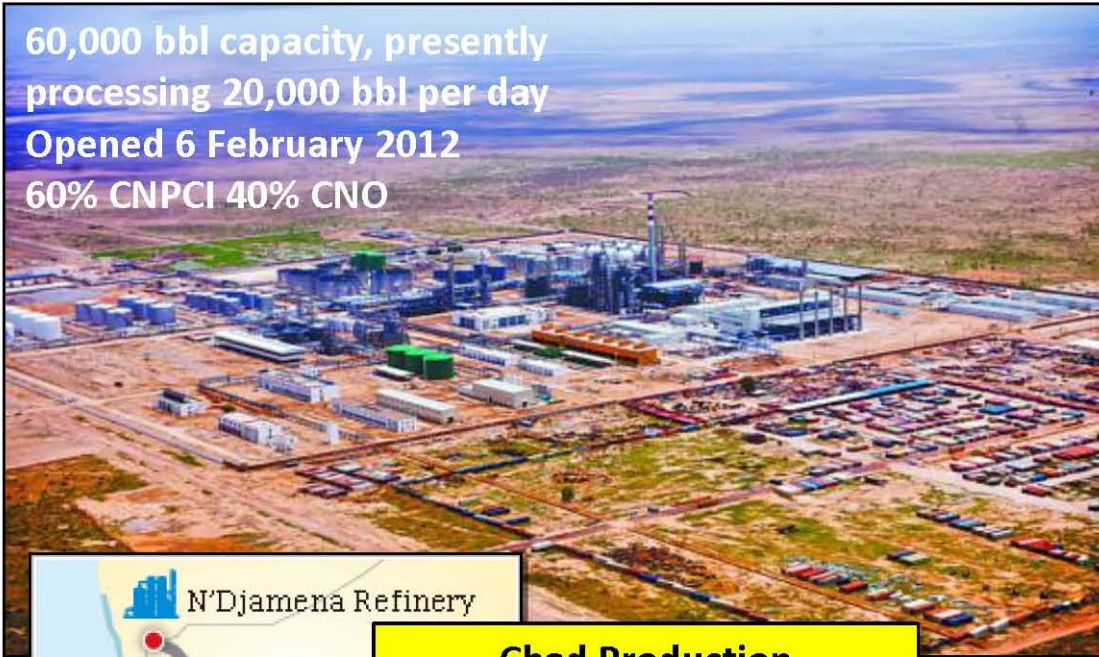
OPIC Benoy #1



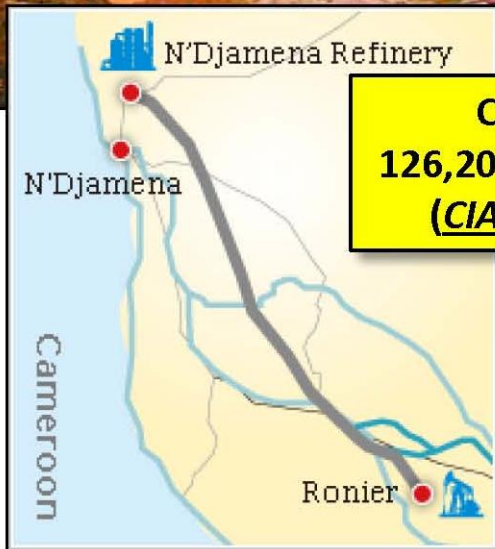
- At the other end of the African Rift Play in Chad, OPIC discovered oil north of Esso's Doba Field (599 MMBOE)
- Operators conservatively estimate that 1,300 billion barrels of oil (equivalent) have been discovered in Chad to date

Chad Infrastructure

60,000 bbl capacity, presently processing 20,000 bbl per day
 Opened 6 February 2012
 60% CNPCI 40% CNO



660 mile long pipeline
 225,000 bbl per day capacity

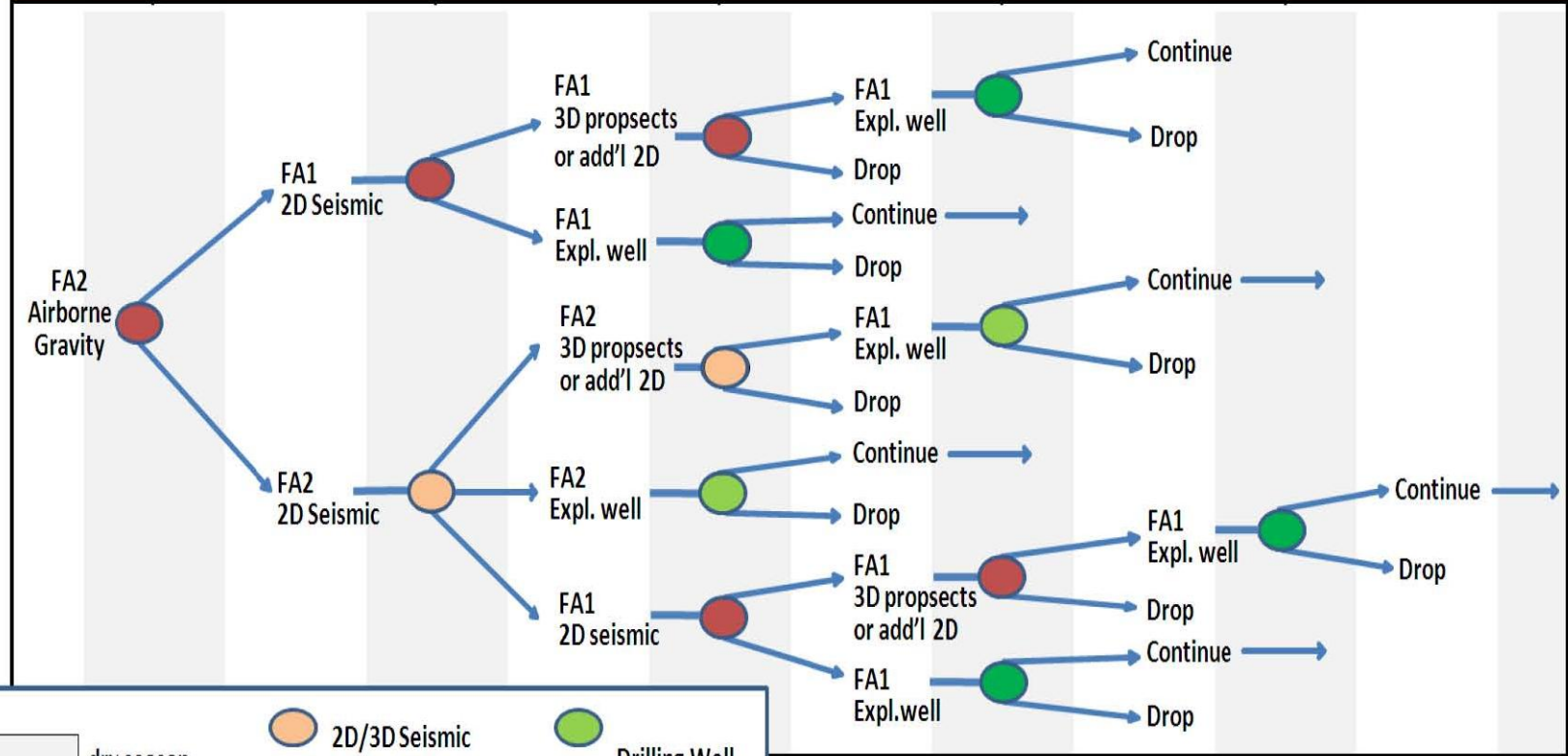


Chad Production
 126,200 bbl per day in 2010
 (CIA World Fact Book)



Chad Work Plans

INITIAL PERIOD																RENEWAL PERIOD				
year2				year3				year4				year5				year 6				year7
Q4	Q1	Q2	Q3	Q4	Q1	Q2	Q3	Q4	Q1	Q2	Q3	Q4	Q1	Q2	Q3	Q4	Q1	Q2	Q3	Q4
2013		2014		2015				2016				2017				2018				



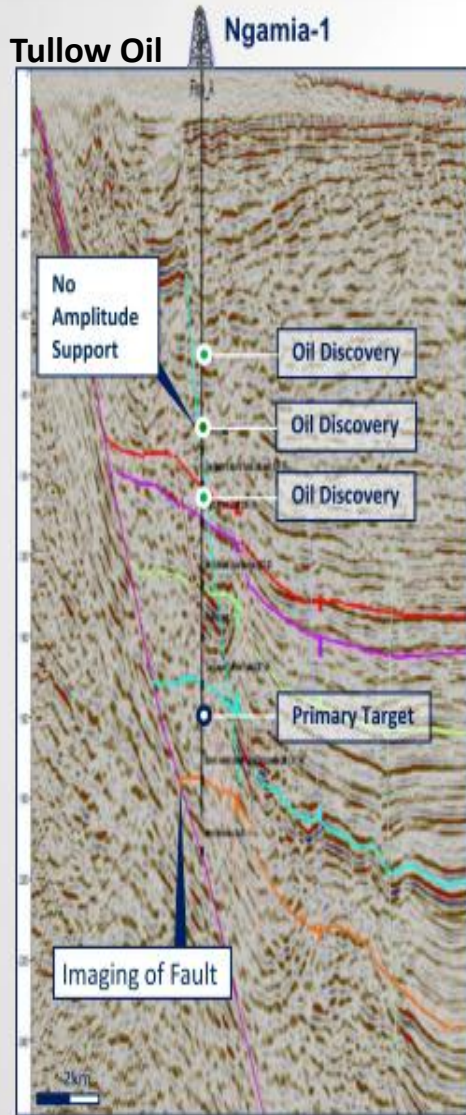
	dry season		2D/3D Seismic		Drilling Well
	Acquisition		Drilling Well		

Republic of Kenya

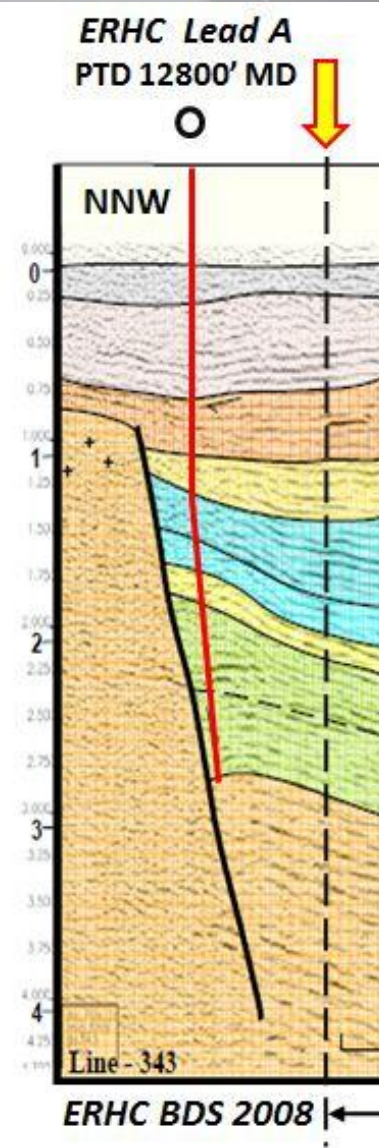


Similarity between Rift Margin play in Kenya and Chad

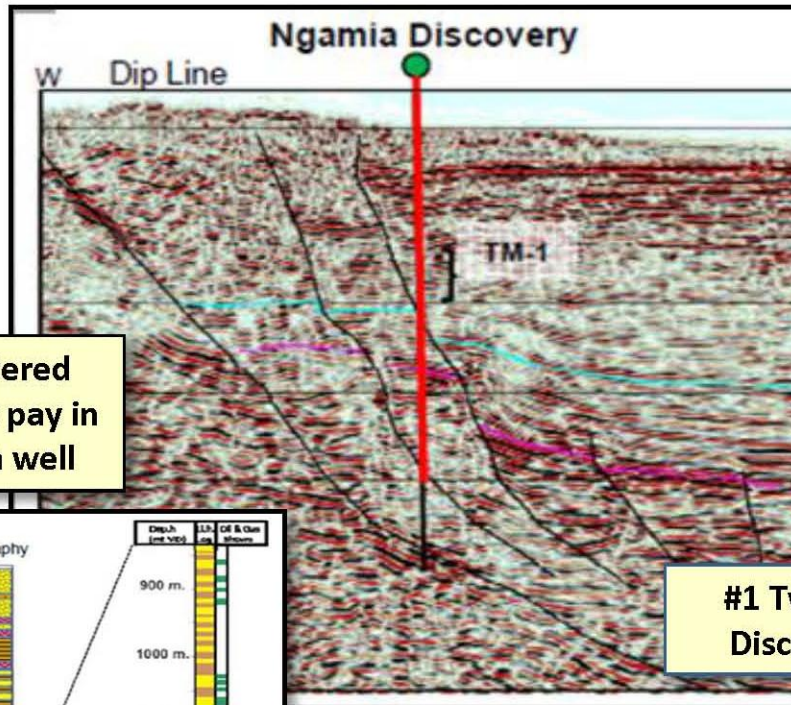
Kenya



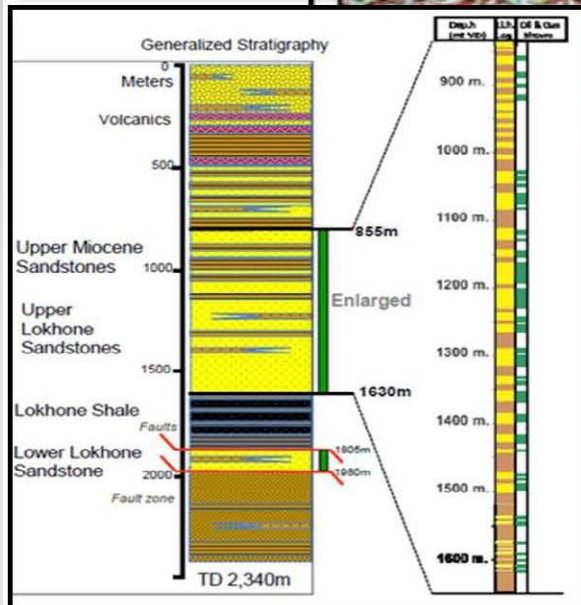
Chad



Tullow #1 Ngamia Discovery, Kenya



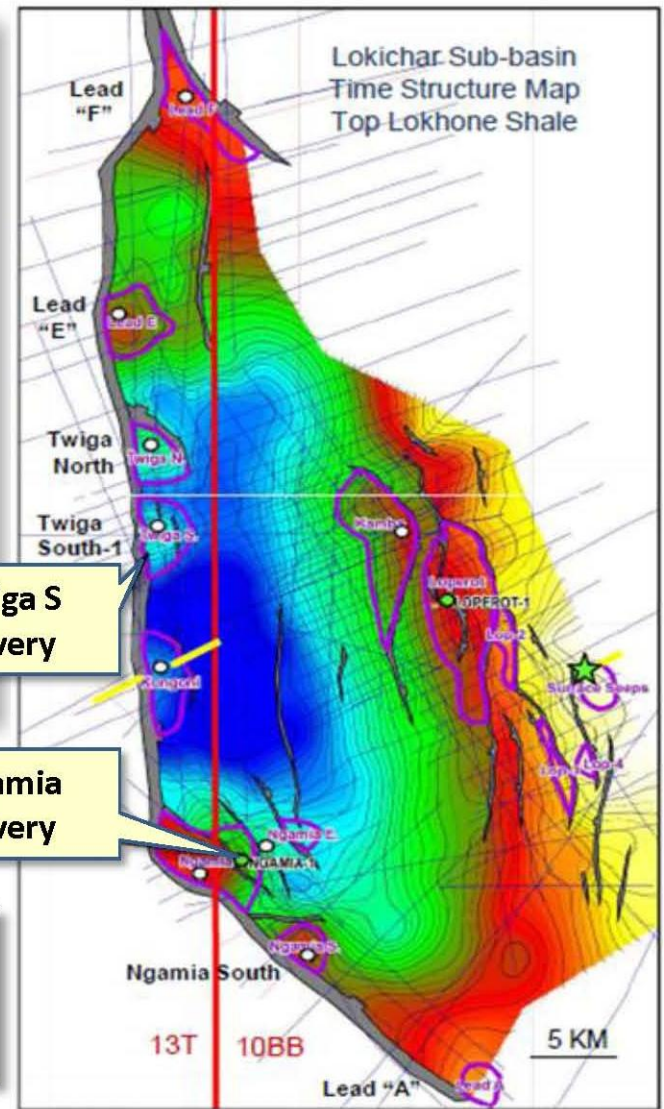
Tullow encountered over 100m of net pay in their #1 Ngamia well



#1 Twiga S Discovery

#1 Ngamia Discovery

Recent maps show that Tullow has many follow up opportunities



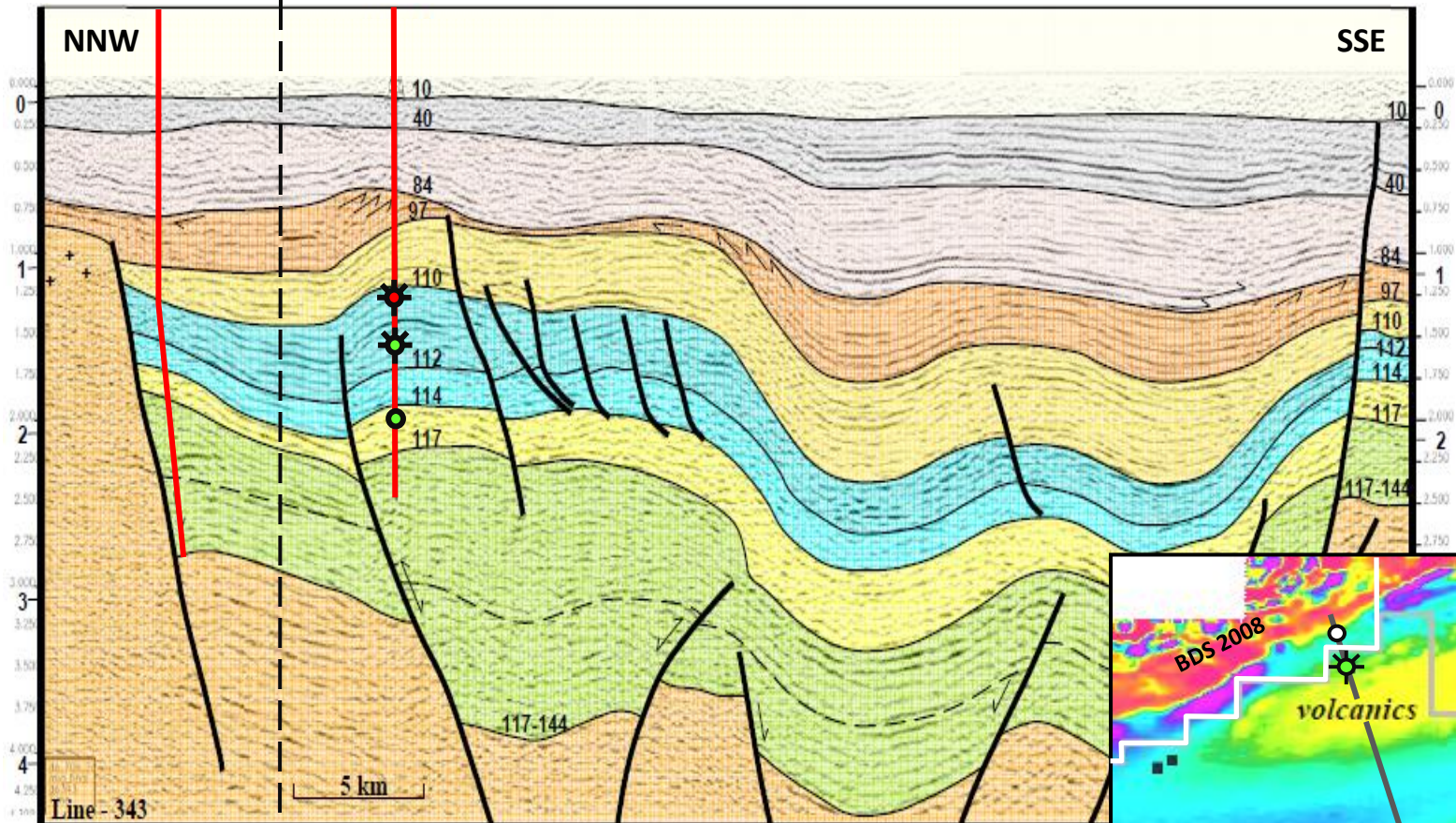
ERHC BDS 2008 "Lead A"

ERHC Lead A

PTD 12800' MD



Esso Tega #1 – 8 MMBOE



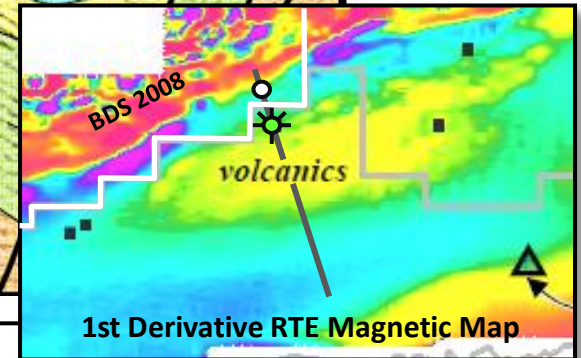
Line - 343

5 km

117-144

ERHC BDS 2008

ESSO CHARI EAST - DOSEO



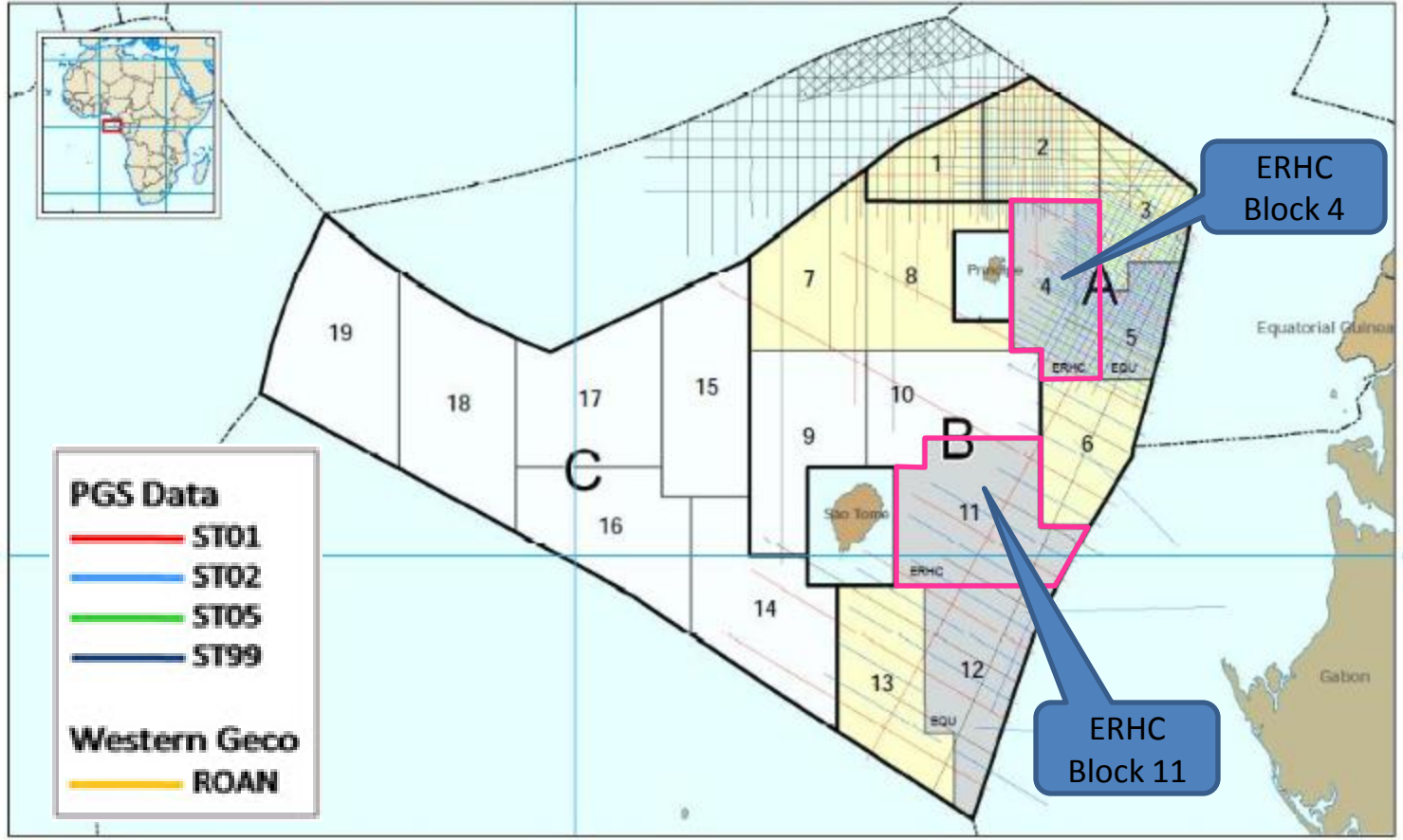
1st Derivative RTE Magnetic Map

São Tomé and Príncipe Exclusive Economic Zone



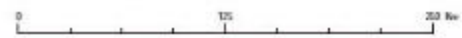


São Tomé and Príncipe 1st Licensing Round

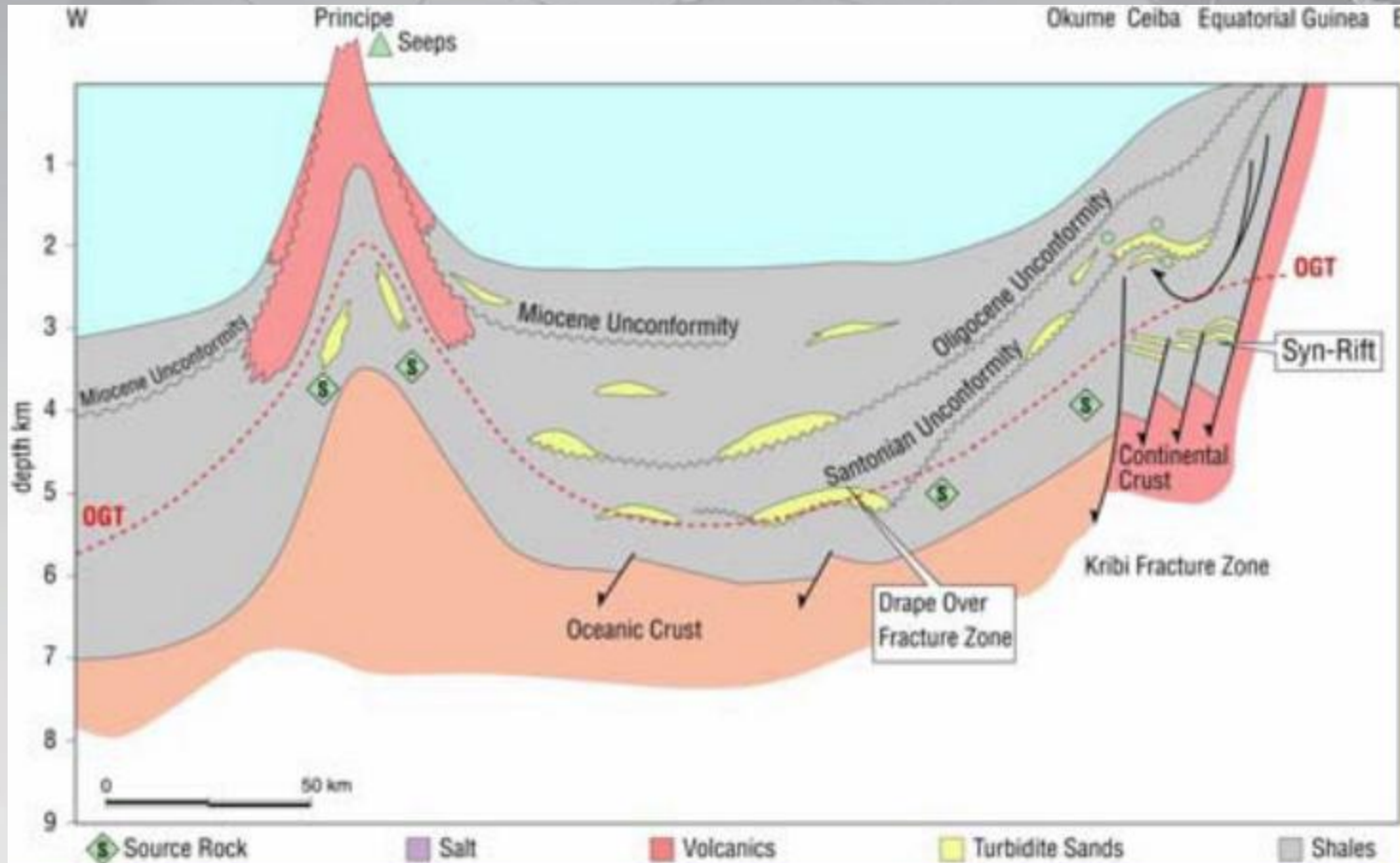


ERHC Block 4

ERHC Block 11



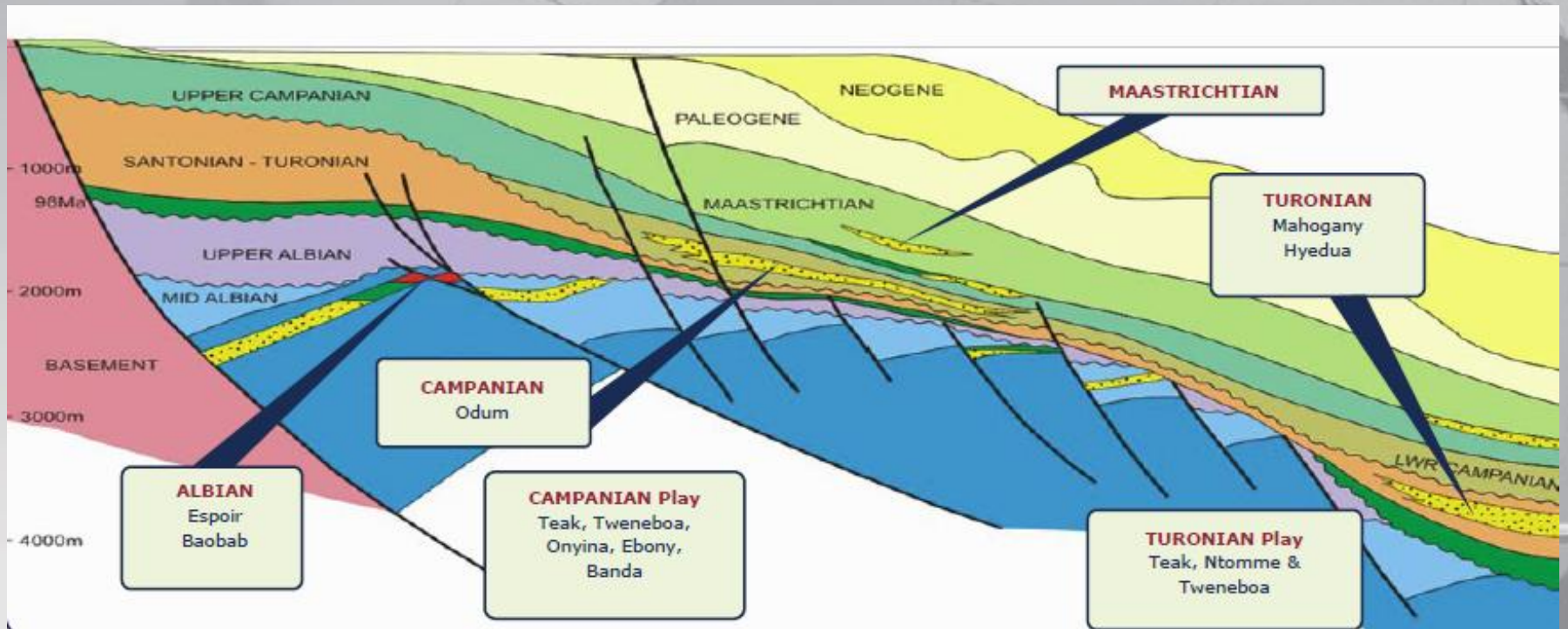
Fairway Plays



Cross section from Príncipe to Equatorial Guinea Margin

- Cretaceous and Tertiary sands from the continental margin extend over the continental crust into the São Tomé EEZ

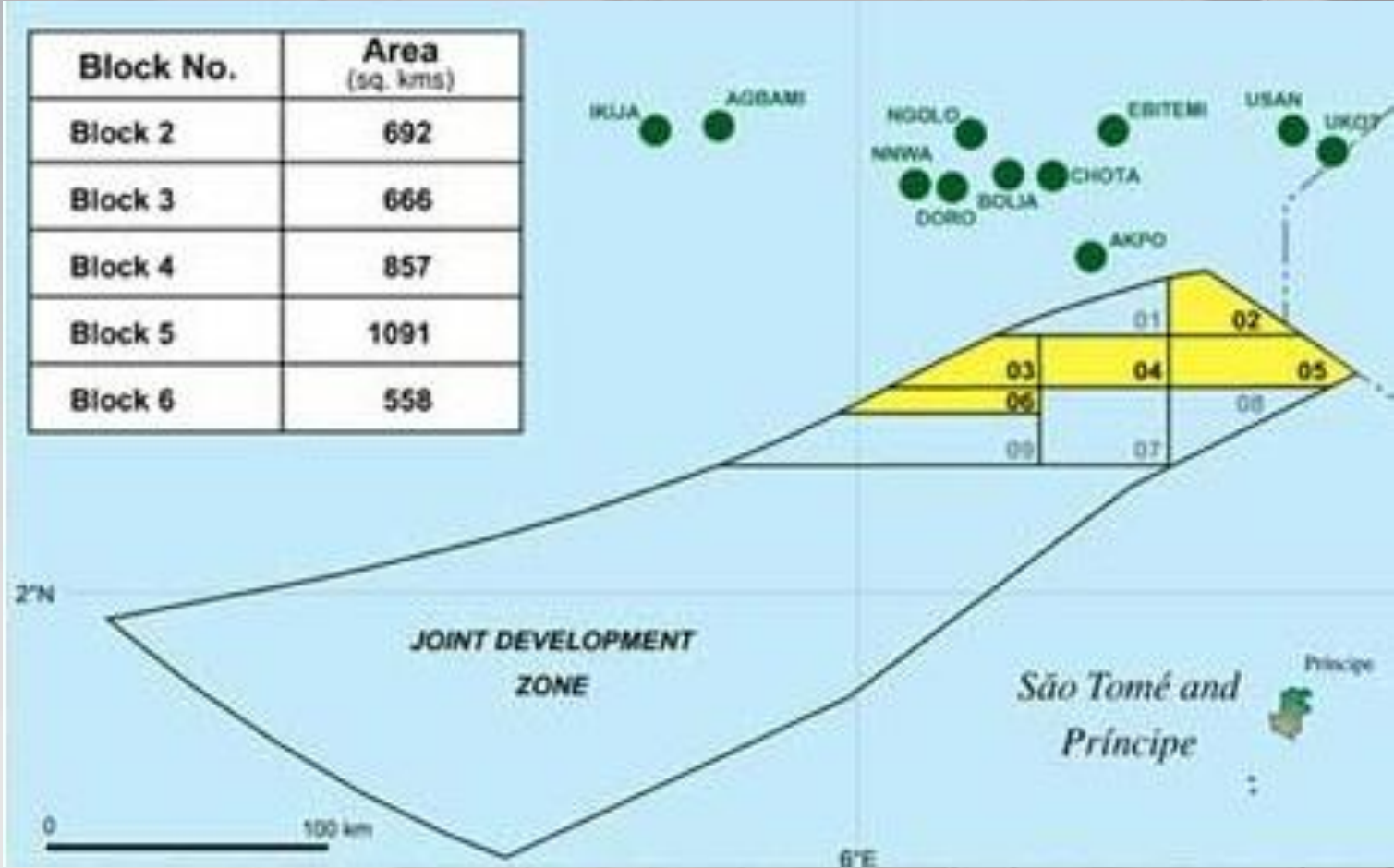
Similarity to Cretaceous Turbidite/Fan Plays Offshore Ghana



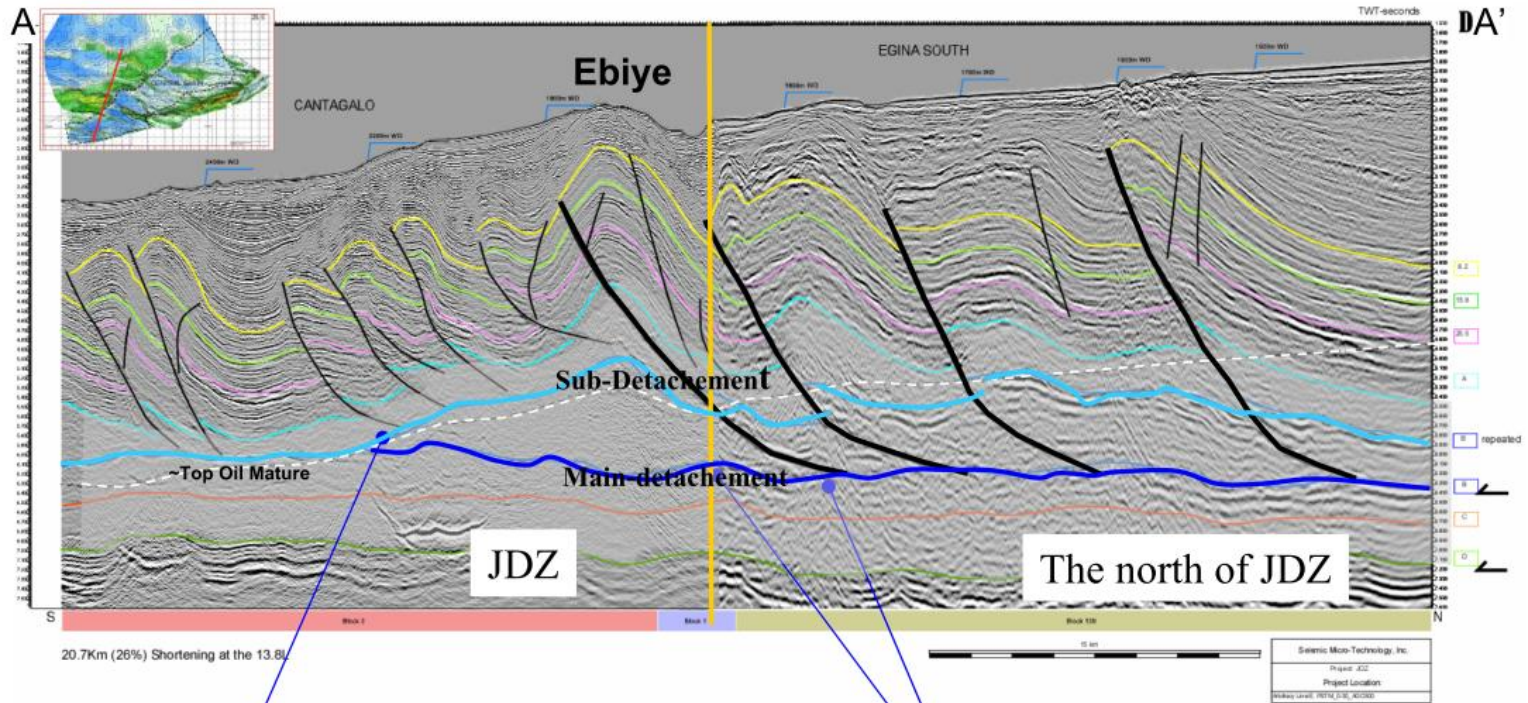
Nigeria - São Tomé and Príncipe Joint Development Zone



Joint Development Zone between Nigeria and Sao Tome e Principe



Migration Pathway



The faults in JDZ terminate at the sub-detachment

The faults to the north of JDZ terminate in the main detachment

Closing

- Exciting Prospectivity in West and Central Africa
- Opportunities onshore and offshore
- ERHC is an established player and potential partner
- Visit: www.erhc.com

Central and Western Africa Exploration



19th Western Africa Oil/Gas
& Energy Conference 2013