



DEEP OPPORTUNITY

www.erhc.com



www.erhc.com

Cautionary Statement

DEEP OPPORTUNITY

www.erhc.com

Statements during this presentation may concern ERHC Energy Inc.'s future operating milestones, future drilling operations, the planned exploration and appraisal program, future prospects, future investment opportunities and financing plans, future shareholders' meetings, response to U.S. governmental authority and related proceedings, as well as other matters that are not historical facts or information. Such statements are inherently subject to a variety of risks, assumptions and uncertainties that could cause actual results to differ materially from those anticipated, projected, expressed or implied. A discussion of the risk factors that could impact these areas and the Company's overall business and financial performance can be found in the Company's reports and other filings with the Securities and Exchange Commission. These factors include, among others, those relating to the Company's ability to exploit its commercial interests in the JDZ and the exclusive territorial waters of São Tomé and Príncipe, general economic and business conditions, changes in foreign and domestic oil and gas exploration and production activity, competition, changes in foreign, political, social and economic conditions, regulatory initiatives and compliance with governmental regulations and various other matters, many of which are beyond the Company's control. Given these concerns, investors and analysts should not place undue reliance on these statements. Each of the above statements speaks only as of the date of hereof. The Company expressly disclaims any obligation or undertaking to release publicly any updates or revisions to any forward-looking statement to reflect any change in the Company's expectations with regard thereto or any change in events, conditions or circumstances on which any of the above statements is based.

Introducing ERHC

DEEP OPPORTUNITY

www.erhc.com

- Valuable E&P assets in Sub-Saharan Africa
- Incorporated in Colorado and based in Texas, USA
- Publicly traded on the U.S. Over the Counter Bulletin Board (OTCBB) – ERHE.OB
- Market cap: ±\$70 million – November 2011

Uniqueness of ERHC

DEEP OPPORTUNITY

www.erhc.com

- Home field advantage
 - Management and board connected with the region
 - Significant investment by African business interests
- Proven record of getting things done



ERHC Board of Directors

DEEP OPPORTUNITY

www.erhc.com



Leslie Blair



**Ambassador (rtd)
Howard Jeter**



Andrew C. Uzoigwe



Friday Oviawe, CPA



Peter Ntephe, CEO

Experienced Board

DEEP OPPORTUNITY

www.erhc.com

- **Ambassador (rtd) Howard Jeter** – Was U.S. Ambassador to Nigeria and the Republic of Botswana and also served as Deputy Assistant Secretary of State for African Affairs, Director of West African Affairs, and Special Presidential Envoy to Liberia.
- **Dr. Andrew Uzoigwe** – A Stanford-trained Engineer, retired from the Nigerian National Petroleum Corporation (NNPC) after holding top positions including Group Executive Director (Exploration and Production).
- **Les Blair** – Has over 35 years experience in Exploration and Production in Africa and Asia. He left Addax in 2010 after 12 years of service in which he was instrumental to expanding Addax's E&P portfolio in Nigeria and Central Asia.
- **Friday Oviawe** – A Certified Public Accountant and Chartered Banker, has extensive financial and accounting experience in West Africa and the United States.
- **Peter Ntephe** – Has thorough knowledge of ERHC's business and oversees the executive management of the Group. He is ERHC's longest serving officer, having initially joined as Group Corporate Secretary in 2001.

ERHC Technical Team

DEEP OPPORTUNITY

www.erhc.com



Dr. Ken Seymour



Dr. Peter Thuo



Gertjan van Mechelen



Michael Shafie



Martin Wensrich

ERHC Technical Team

DEEP OPPORTUNITY

www.erhc.com

- **Dr. Ken Seymour, Petroleum Engineer** – Has worked in E&P for over 30 years. He has extensive experience in Africa, particularly in Angola and Nigeria. His key competencies include E& P deal creation and asset acquisition, portfolio management, joint venture and asset management, and well engineering.
- **Dr. Peter Thuo, Geoscientist** – His 26 years with the National Oil Corporation of Kenya (NOCK), where he served as Exploration Team Leader, leading the Exploration and Production department, is invaluable for ERHC Energy, particularly on the exploration potential of basins in East and Central Africa.
- **Gertjan van Mechelen, Exploration Manager** – Has more than 35 years experience in oil and gas exploration and oversees exploration activities at the Company's growing portfolio of onshore and offshore assets in Africa.
- **Michael Shafie, Geoscientist** – Has 29 years of experience in exploration and development of oil and gas fields throughout the shelf and deep water provinces of West Africa, the U.S., Malaysia, Vietnam, Egypt, Venezuela and Black Sea.
- **Martin Wensrich, Geoscientist** – Has over 36 years of experience with a strong background in applied geology and geophysics. A proven oil finder with more than 150 MMBOE in discoveries and reserves additions. His geographic experience covers North America, Africa and Australia.

ERHC Management Team

DEEP OPPORTUNITY

www.erhc.com



Peter C. Ntephe
President & CEO



Sylvan Odobulu
**Vice President,
Administration and
Financial Controller**



Reginald Sewell
Corporate Counsel

Strong Management

DEEP OPPORTUNITY

www.erhc.com

- **Peter Ntephe, Chief Executive Officer**

Over 24 years of experience. Has been involved in fundamental aspects of the Company's executive management since 2001 and oversees the general administration and governance of ERHC and its subsidiaries, ensuring the group meets its strategic objectives.

- **Sylvan Odobulu, Vice President (Administration) and Controller**

An expert in local acquisition activities, management of government stakeholders and the integration of all development exploration activities at the regional level, Mr. Odobulu is responsible for corporate wide treasury, human resource and internal controls.

- **Reginald Sewell, Corporate Counsel**

Advises the Company on business organization and governance, corporate finance, mergers and acquisitions, private placements, joint ventures and private equity

Brief Overview of O&G Assets

DEEP OPPORTUNITY

www.erhc.com

- 100% of two blocks and other rights in the Sao Tome & Principe Exclusive Economic Zone
- Rights in six of the nine blocks of the Joint Development Zone



- Three oil blocks in Republic of Chad
- One oil block in northwest Kenya



DEEP OPPORTUNITY

www.erhc.com

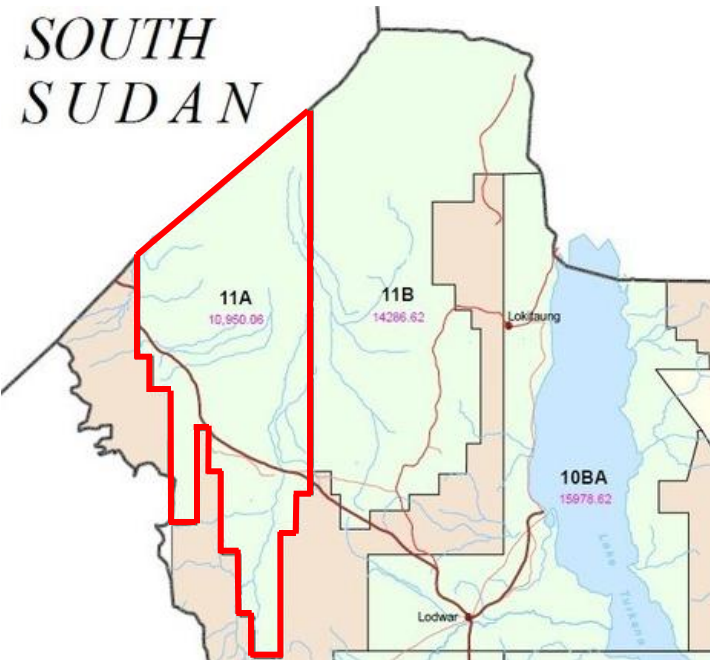
I. ERHC's Interests in the Republic of Kenya

Kenya Block 11A

DEEP OPPORTUNITY

www.erhc.com

*SOUTH
SUDAN*



- Encompasses 11,950 square kilometers or 2.95 million acres
- Situated on Kenya's border with South Sudan to the north, Block 11B and Lake Turkana to the east and near Kenya's border with Uganda to the west
- In the vicinity of recent significant discoveries

Recent Exploration Success

- Eliye Springs well is in the adjacent Block 10BA
- Loperot and Ngamia-1 wells in Block 10BB are also nearby

Northwest Kenya

The proximity and in-trend relationship between the Lotikipi plain and the Abu Gabra Rift basins of southern Sudan suggest high oil and gas prospectivity

Similar to Uganda Finds

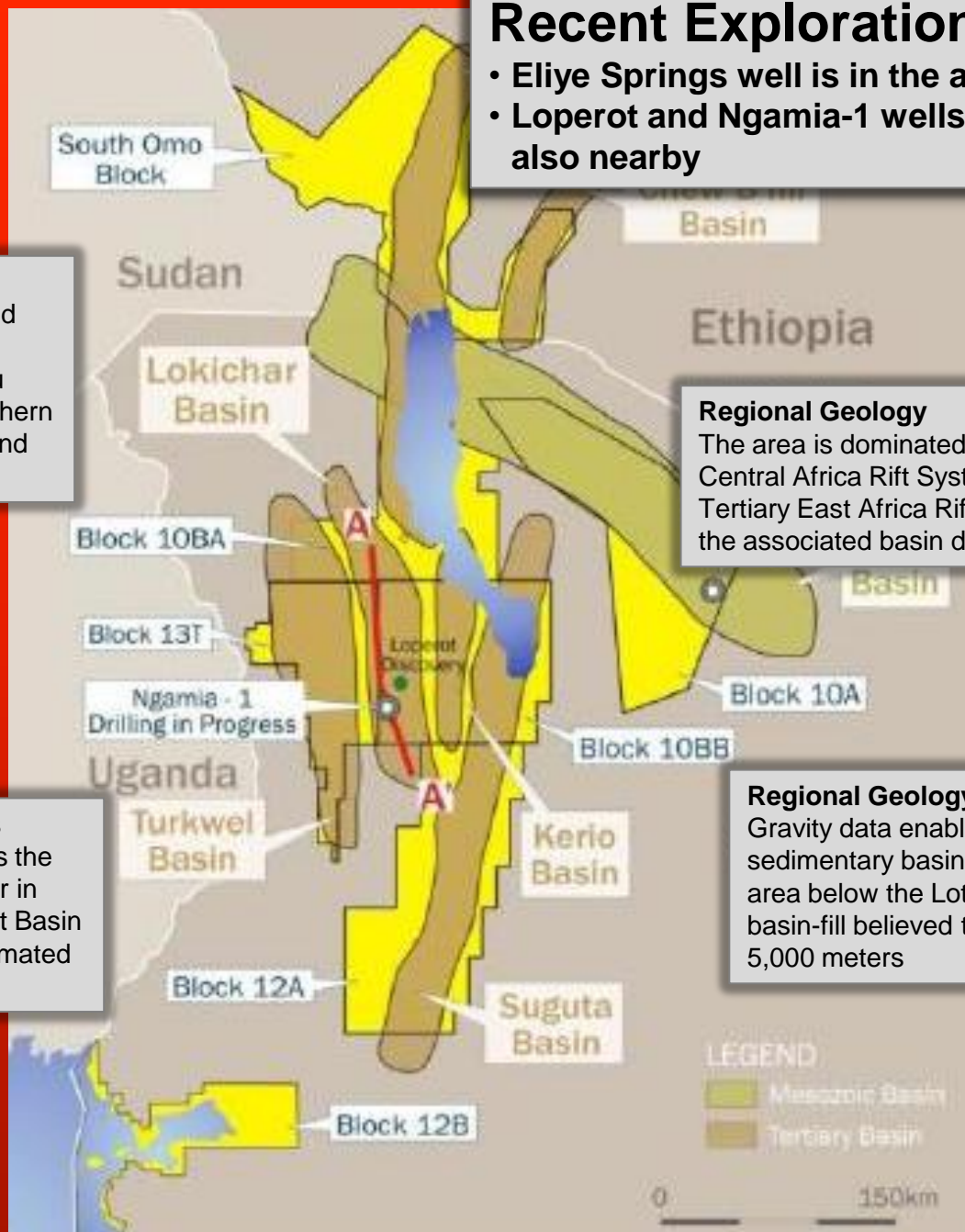
Operator Tullow estimates the discoveries may be similar in size to the Lake Albert Rift Basin in Uganda, which are estimated at 2,000 MMBOE

Regional Geology

The area is dominated by the Cretaceous Central Africa Rift System (CARS) and the Tertiary East Africa Rift System (EARS) with the associated basin depositional trends

Regional Geology

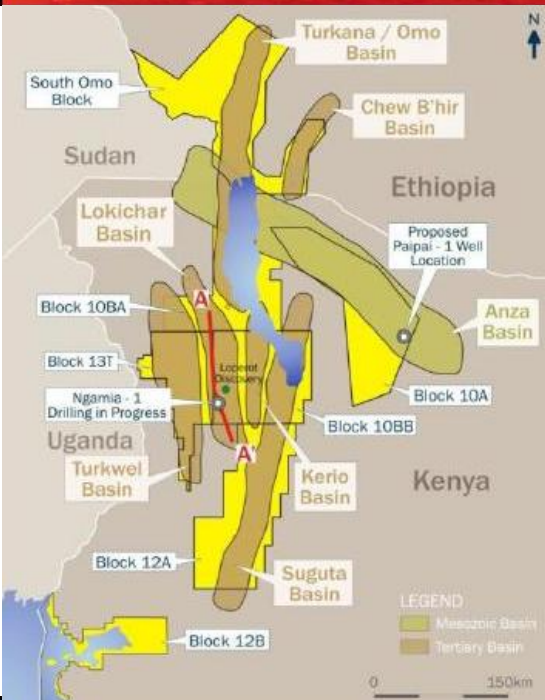
Gravity data enabled the delineation of a sedimentary basin within the Block 11A area below the Lotikipi plain with a basin-fill believed to be in excess of 5,000 meters



Republic of Kenya

DEEP OPPORTUNITY

www.erhc.com



- Eliye Springs well is in adjacent Block 10BA
- The Loperot and Ngamia-1 wells in Block 10BB are nearby
- The Loperot well recovered light paraffinic oil sourced from an excellent type 1 oil-prone lacustrine shale
- The Ngamia-1 well has encountered significant oil columns



DEEP OPPORTUNITY

www.erhc.com

II. ERHC's Interests in the Republic of Chad

Briefing: Republic of Chad

DEEP OPPORTUNITY

www.erhc.com



- One of sub-Saharan Africa's significant crude oil producers
- Shares borders with oil producing nations Nigeria, Libya, Sudan and Cameroun
- U.S. companies have invested \$3.7 billion to develop oil reserves - estimated at 1 billion barrels

Republic of Chad

- Proven Reserves are 1.5 Billion Bbls

Source International Petroleum Encyclopedia

- Undeveloped Discoveries are 2.6 Billion Bbls, and 14.6 TCF of Gas

Source USGS, World Petroleum Resources Project

Niger

CNPC largest player
Current Production: ~17,000 bbl/d
Unconfirmed EUR: 1.0 Blnbbl
Continue to explore

Ndjamena Refinery

Operator: CNPC
Capacity: 20,000 bbl/d expandable to 60,000 bbl/d
Online Date: June 2011
Supply: Block H Area II (CNPC)

Block H Area II

Operator: CNPC (Former EnCana)
Expected Production: ~17,000 bbl/d
Reserves (remaining): 85 MMbbl
OOIP: 700 mmbbl (CNPC)
Continue to explore

Chad/Cameroon Pipeline

Operator: Exxon
Capacity: 225,000 bbl/d
Utilization: 115,000 bbl/d
Distance: 1,070 km
Port: Cameroon loading
Expandable by adding pump stations

Sudan All Fields

Key Operators: CNPC & Consortiums
Current Production: 465,000 bbl/d
Peak Production: 538,000 bbl/d (2011)
Reserves (remaining): 1.96 Bln bbls
EUR: 3.0 Bln bbls
Key basins: Muglad, Melut
Wells Drilled: 300
Commercial & Technical Success: 60%

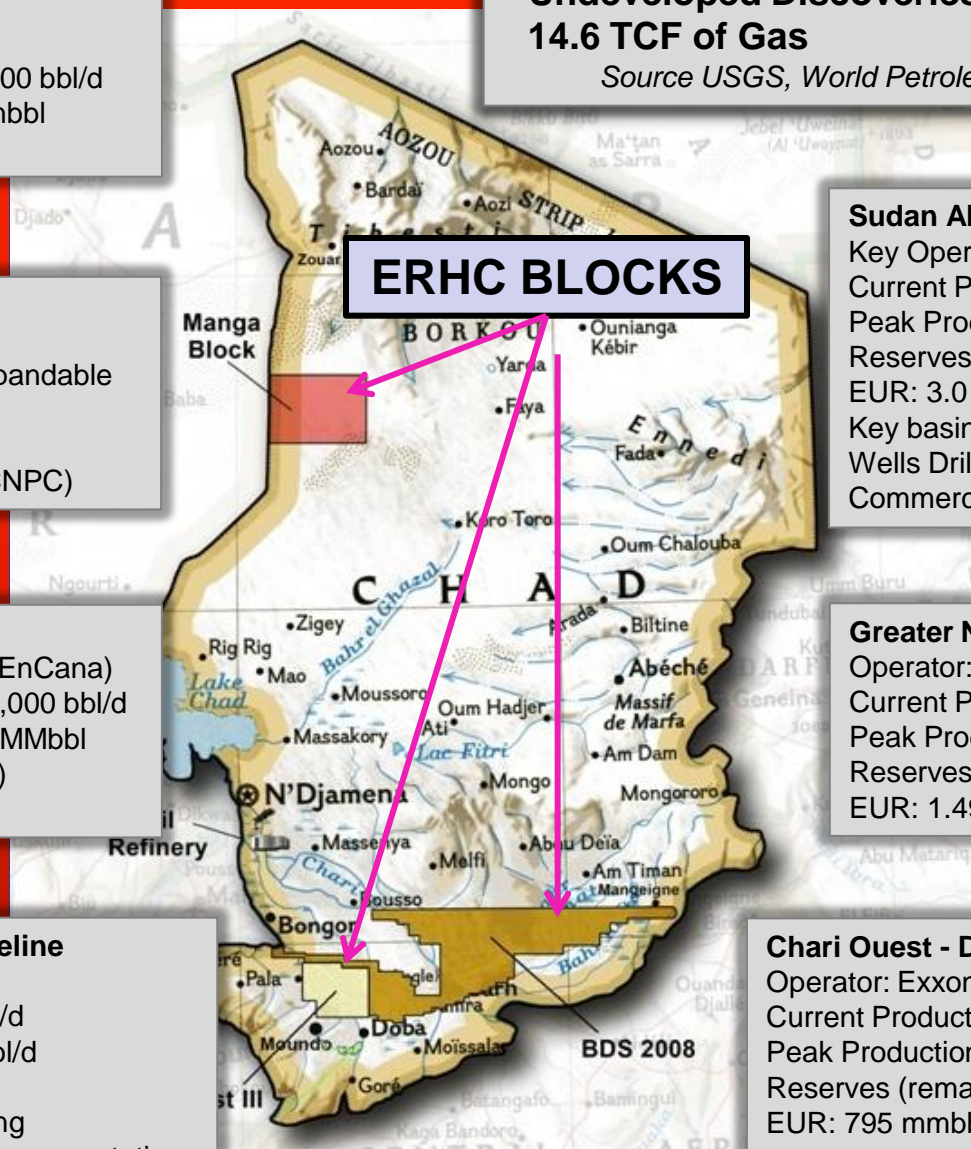
Greater Nile Oil Project

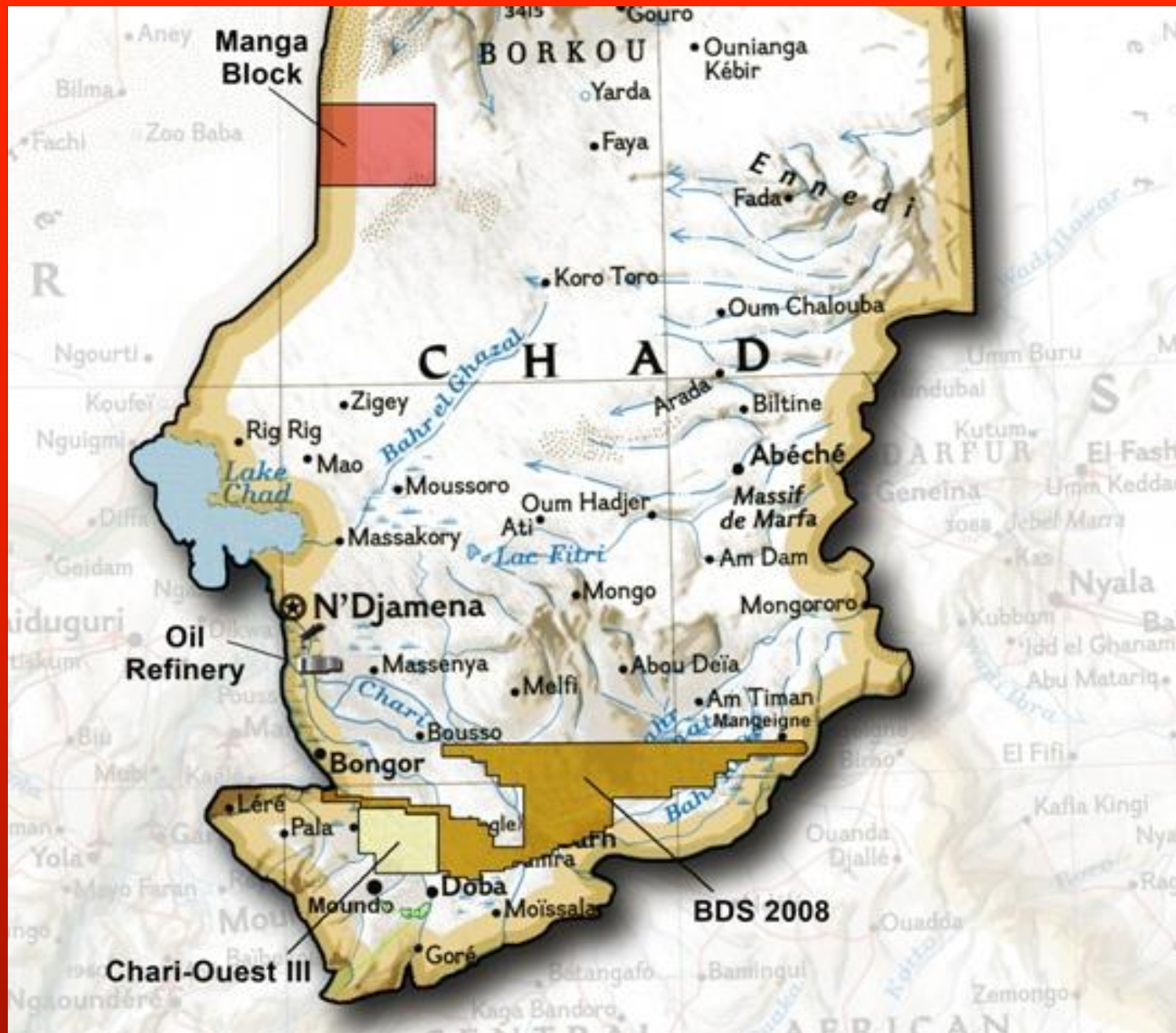
Operator: GNPOC (Formerly Arakis)
Current Production: 203,000 bbl/d
Peak Production: 300,000 bbl/d (2004)
Reserves (remaining): 662 MMbbl
EUR: 1.49 Bln bbl

Chari Ouest - Doba Basin

Operator: Exxon (Esso)
Current Production: 115,000 bbl/d
Peak Production: 220,000 (2004)
Reserves (remaining): 462 MMbbl
EUR: 795 mmbbl

ERHC BLOCKS





ERHC's Exploration Blocks in Chad

DEEP OPPORTUNITY

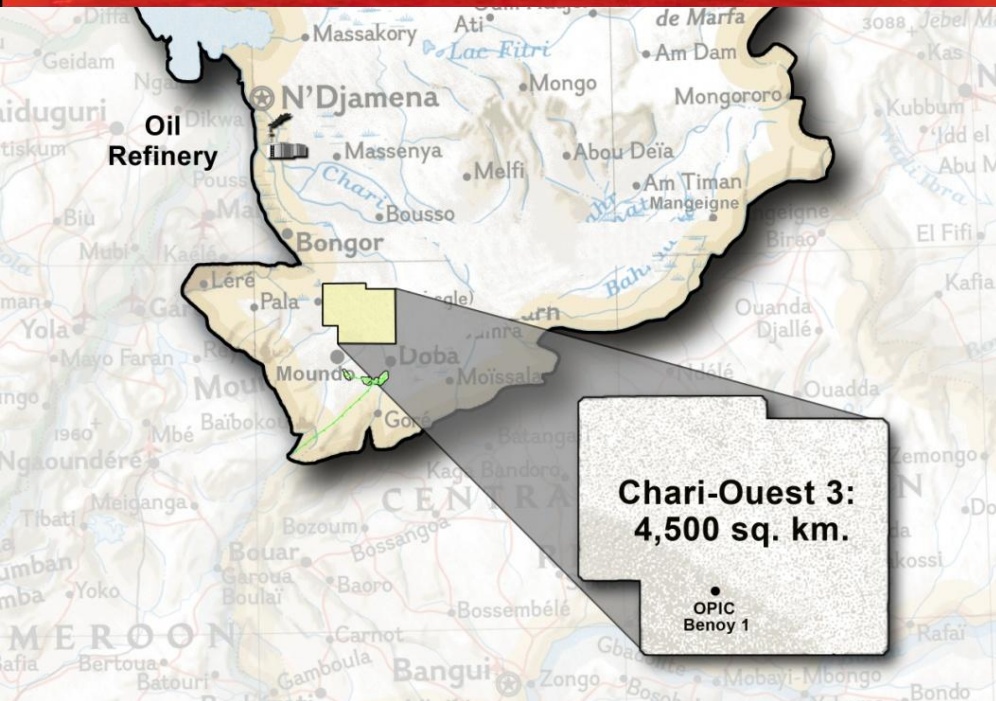
www.erhc.com

Block	Sq. Km.	Acres	Working Interest
Chari-Ouest III	4,500	1,111,974	50%
BDS 2008	16,360	4,042,644	100%
Manga	6,77	1,600,501	100%

Chari-Ouest 3

DEEP OPPORTUNITY

www.erhc.com

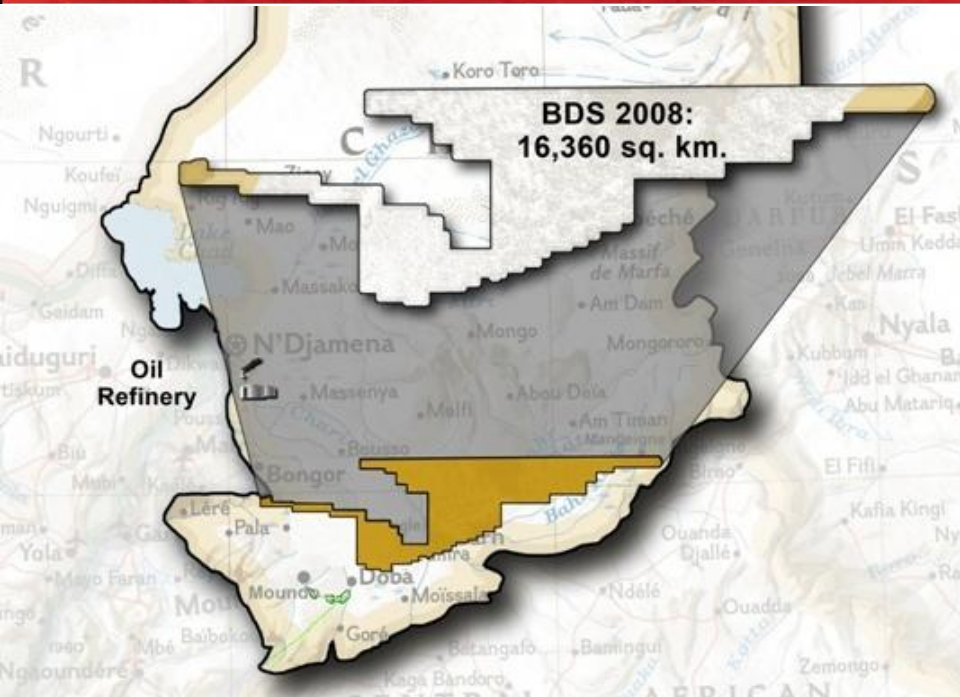


- ERHC has 100% interest in half of the block
- 4,500 sq. km.
- Adjacent to OPIC's Benoy 1 discovery
- Analysis determined Block falls within the prolific Doba/Doseo Basin

BDS 2008

DEEP OPPORTUNITY

www.erhc.com

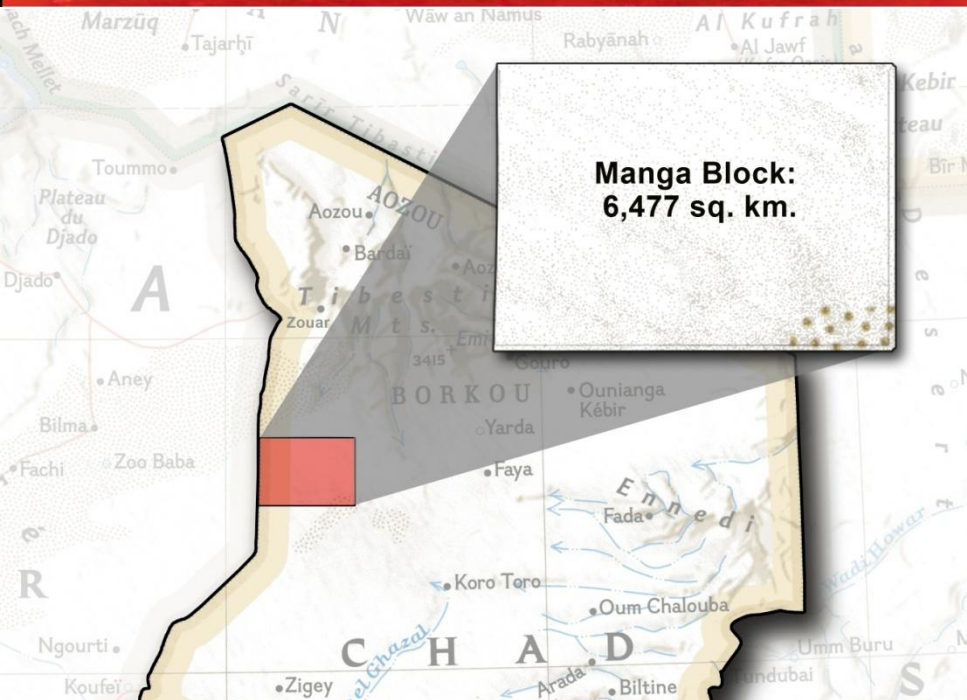


- 16,360 sq. km.
- Virtually surrounds the Bongor West block
- Bordered to the south by Chari East-Doseo block
- Analysis determined Block falls within the prolific Doba/Doseo Basin

Manga Block

DEEP OPPORTUNITY

www.erhc.com



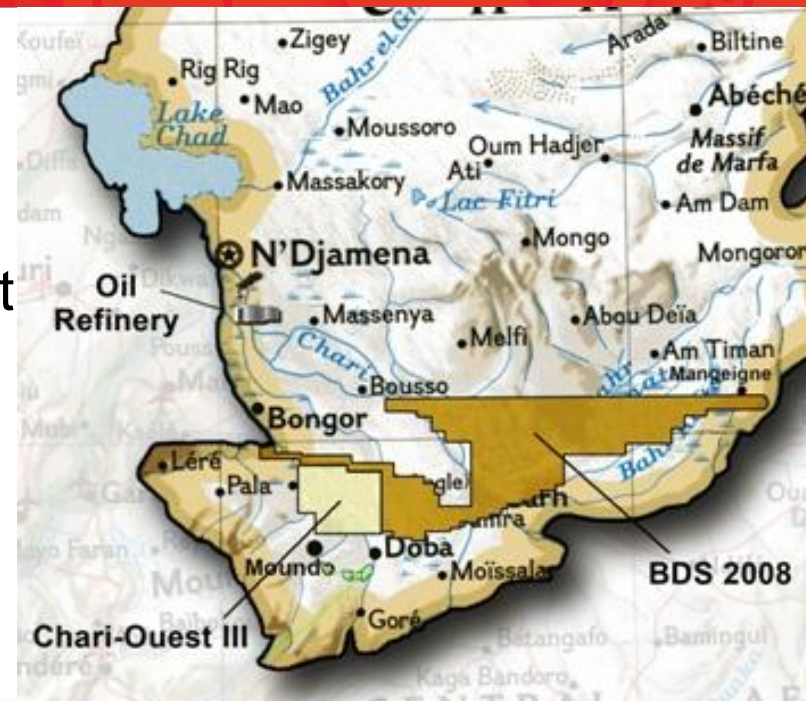
- 6,477 sq. km.
- Intersected by the Borkou-Ennedi Sub-basin
- North of Lake Chad basin where exploration work is underway

Prospectivity of ERHC Blocks

DEEP OPPORTUNITY

www.erhc.com

- Focus area extends 260 km. and is on trend and east of OPIC discovery and north of Esso discoveries
- The ERHC team expects to find at least three prospects with a 30 percent chance of success on ERHC's blocks
- ERHC estimates a combined mean potential of 63 MMBOE and the upside exceeds 332 MMBOE



ERHC ENERGY
5444 Westheimer Road, Suite 1440
Houston, Texas 77056
713.626.4700 Tel | 713.626.4704 Fax
www.erhc.com
Ticker: ERHE.OB

Chad / Cameroon Pipeline System

www.erhc.com



- Distance: 1,070 km
- Size: 30 inch
- Capacity: 225,000 BOPD expandable to 600,000 BOPD
- Current Delivery: 120,000 BOPD
- Owners: Consortium of Chad and Cameroon Governments

ERHC ENERGY
5444 Westheimer Road, Suite 1440
Houston, Texas 77056
713.626.4700 Tel | 713.626.4704 Fax
www.erhc.com
Ticker: ERHE.OB



DEEP OPPORTUNITY

www.erhc.com

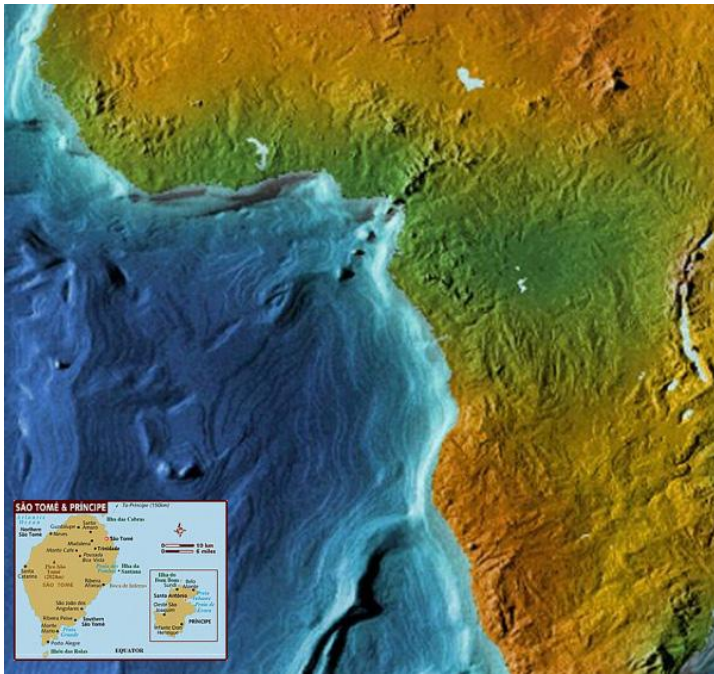
III. São Tomé & Príncipe Exclusive Economic Zone

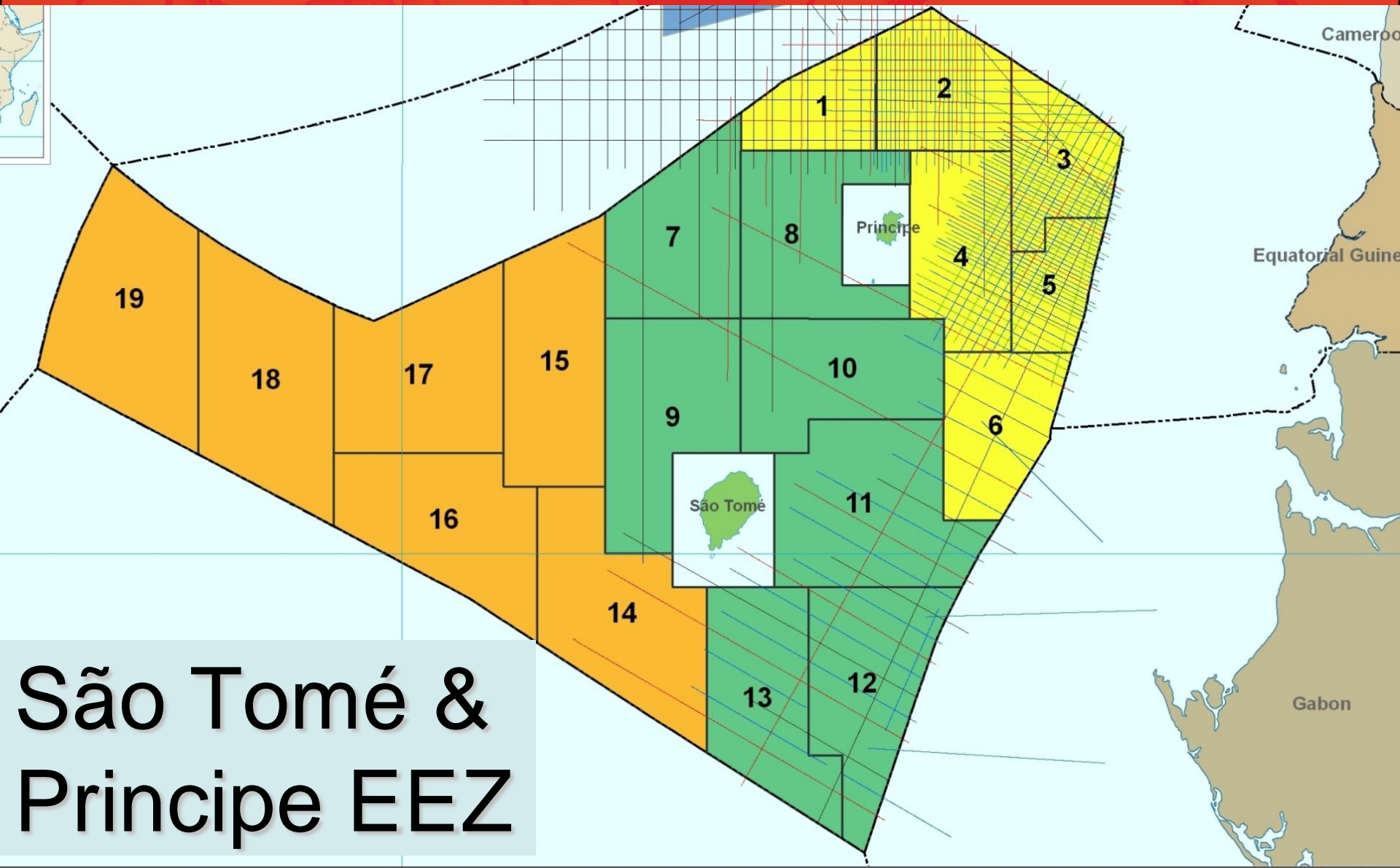
Briefing: São Tomé & Príncipe

DEEP OPPORTUNITY

www.erhc.com

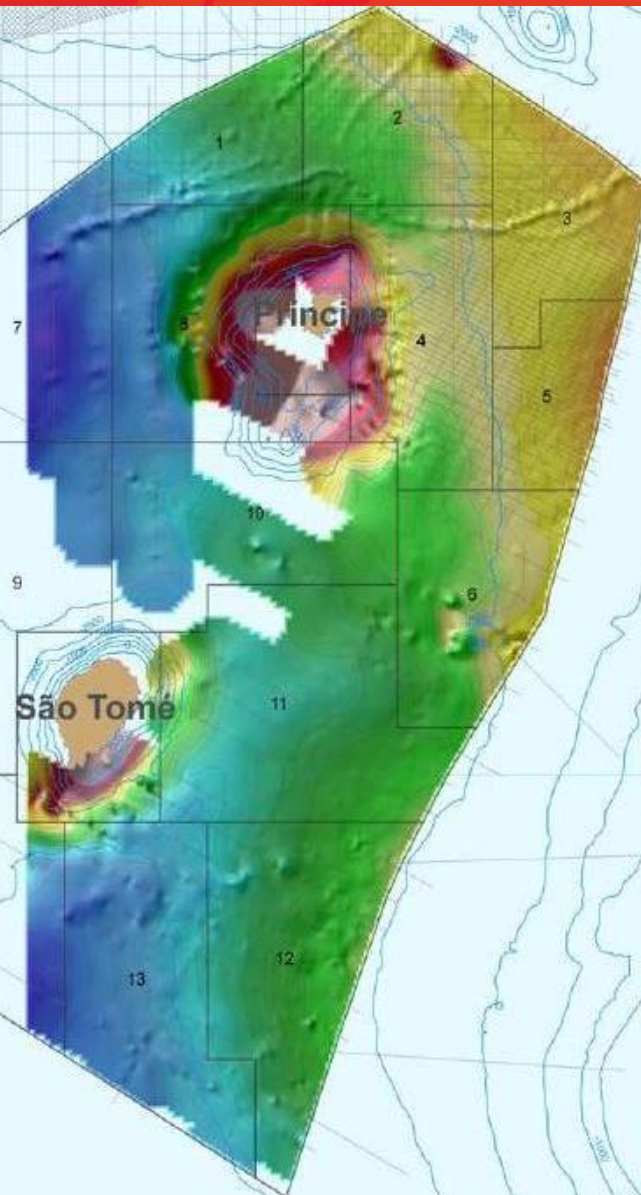
- In the Gulf of Guinea, off the coast of West Africa, 150 miles from Gabon
- Government: Robust and Stable Democracy
- Capital: São Tomé
- Population: 160,000 (estimate 2007)
- Official Language: Portuguese





São Tomé & Príncipe EEZ

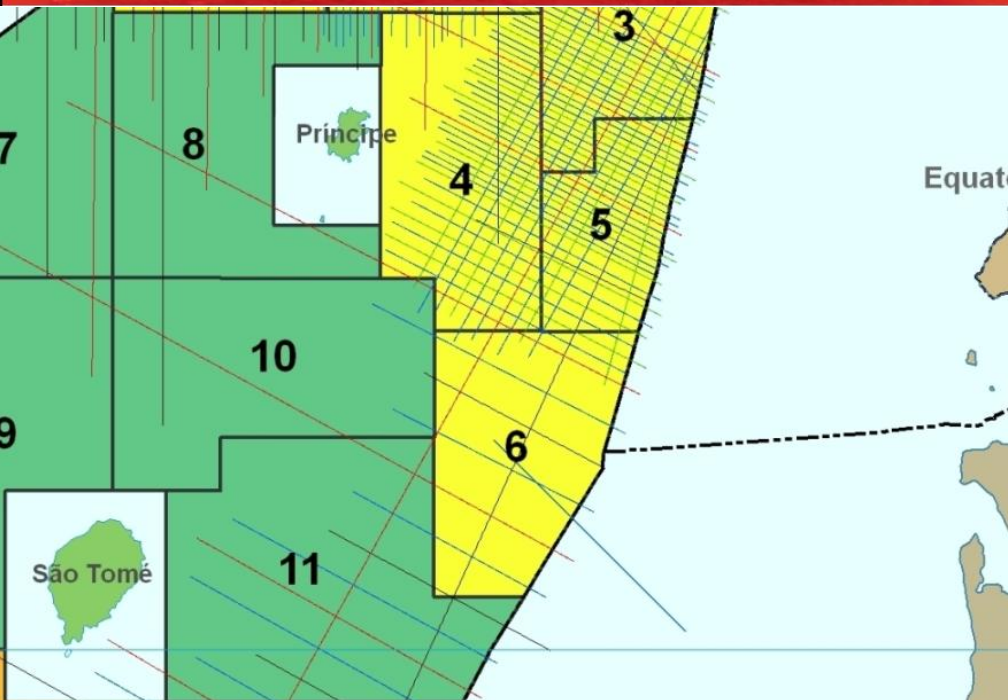
Good quality 2D
and 3D seismic
data acquired by
Petroleum Geo-
Services (PGS)



DRSTP EEZ Status

DEEP OPPORTUNITY

www.erhc.com

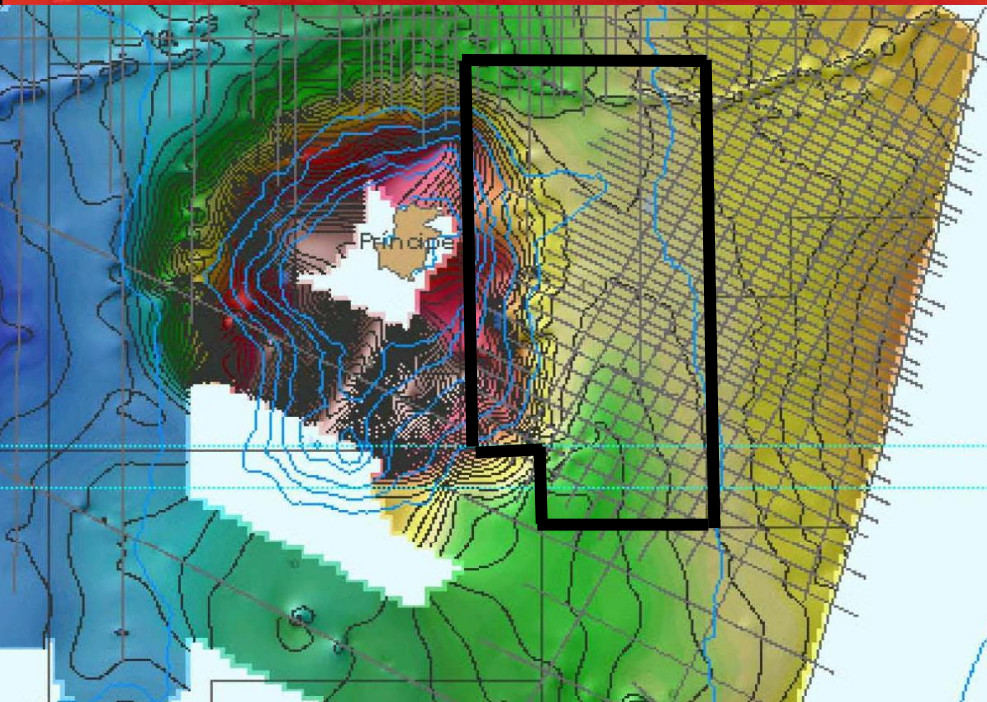


- ERHC holds EEZ Blocks 4, 11 (100%)
- Signature bonus free
- Will consider bidding for 15% interests in two other Blocks

EEZ Block 4 Analysis

DEEP OPPORTUNITY

www.erhc.com

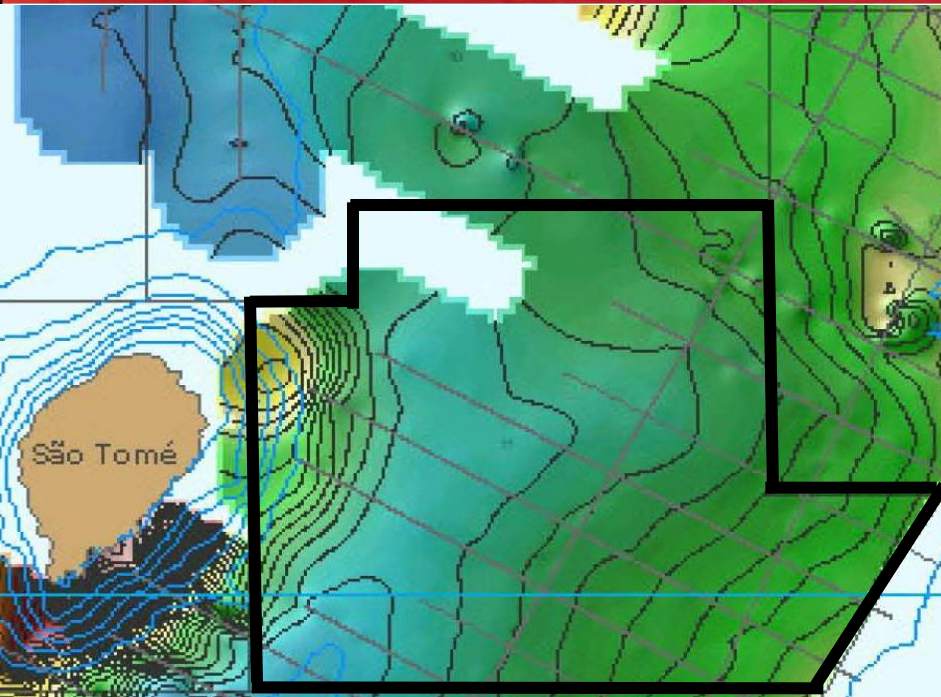


- Totals 5,808 square km
- Situated directly east of the island of Príncipe
- Block situated to the west of the highly prospective Gabon Salt Basin
- Area near EEZ Block 4 contains a large graben structure, which is bound by the Kribi Fracture Zone

EEZ Block 11 Analysis

DEEP OPPORTUNITY

www.erhc.com



- Totals 8,941 square km
- Situated directly east of the island of São Tomé
- Abuts territorial waters of Gabon
- Situated to the west of the highly prospective Gabon Salt Basin
- The Southern area of the EEZ contains parts of the Ascension and Fang Fracture Zones



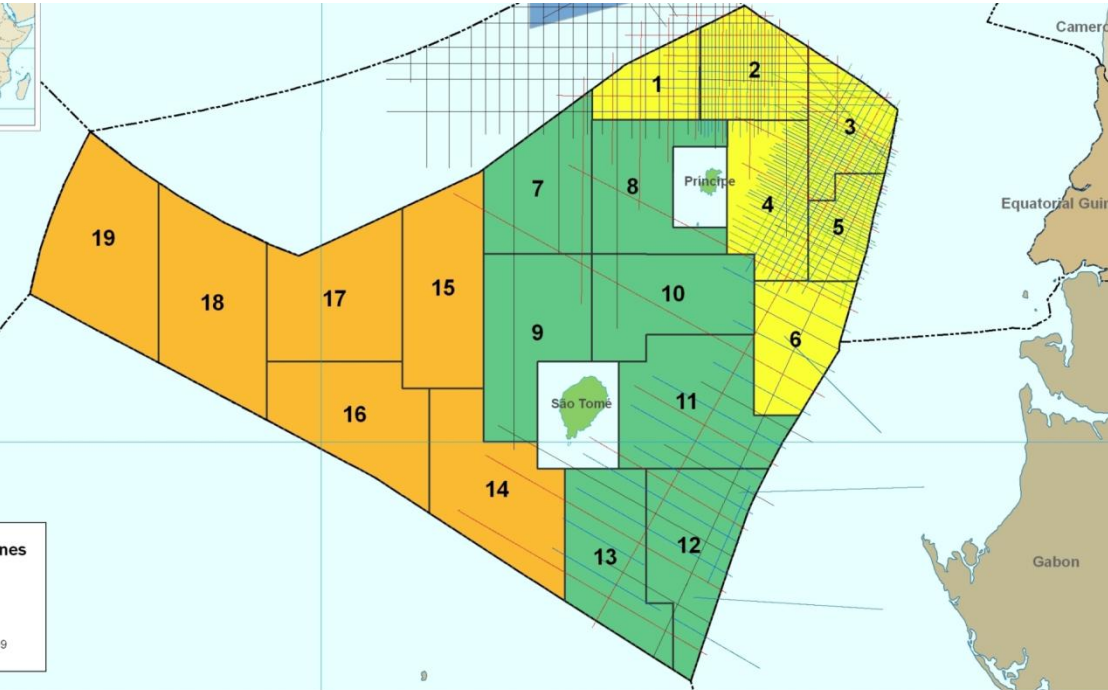
ERHC's EEZ Blocks are situated directly to the West of Gabon's many offshore oil discoveries



PSC Negotiations

DEEP OPPORTUNITY

www.erhc.com



Negotiations of
Production Sharing
Contracts for EEZ
Blocks 4 and 11
are underway



DEEP OPPORTUNITY

www.erhc.com

IV. Nigeria - Sao Tome & Principe Joint Development Zone

ERHC's JDZ Interests

DEEP OPPORTUNITY

www.erhc.com

JDZ Block	Current ERHC Interest
Block 2	22.0%
Block 3	10.0%
Block 4	19.5%
Block 5	15.0%
Block 6	15.0%
Block 9	20.0%

Capital Preservation

DEEP OPPORTUNITY

www.erhc.com

- 'Carry' arrangements with technical partners in JDZ Blocks 2, 3 and 4
- Costs of exploration borne by partners
- Cost recovery from production



JDZ Exploration

DEEP OPPORTUNITY

www.erhc.com



- Five-well drilling campaign completed in January 2010
- Over \$300m expended
- Biogenic methane gas discovered
- Analysis continuing

Nearby Discoveries

DEEP OPPORTUNITY

www.erhc.com



Significant Discoveries:

- Bonga: 600 MMBOE
- Ikija-1: 500 MMBOE
- Agbami: 1,000 MMBOE
- Nnwa-2: Gas discovery
- Akpo-1: 500 MMBOE
- Ukot: 200-300 MMBOE

Expected Q3 2012

DEEP OPPORTUNITY

www.erhc.com



- Expiration of Exploration Phase I on March 14, 2012
 - Parties to propose next steps
 - Joint Development Authority to determine how to proceed



DEEP OPPORTUNITY

www.erhc.com

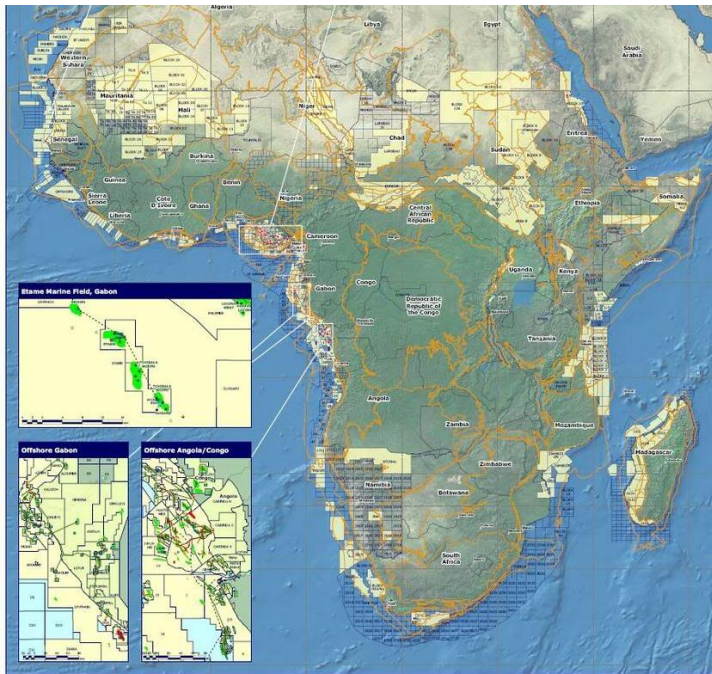
IV. Growth through Strategic Acquisitions

Acquisition Strategy

DEEP OPPORTUNITY

www.erhc.com

- Aggressively pursuing E&P opportunities throughout Sub-Saharan Africa
- Particular interest in new frontiers in West and East Africa
- Opportunistic acquisitions of undervalued corporates with operations in Sub-Saharan Africa



Strategic Objectives

DEEP OPPORTUNITY

www.erhc.com

- Diversify portfolio of assets and complement current holdings
 - Geographically
 - Development lifecycle
- Accelerate pace of revenue generation



ERHC ENERGY
5444 Westheimer Road, Suite 1440
Houston, Texas 77056
713.626.4700 Tel | 713.626.4704 Fax
www.erhc.com
Ticker: ERHE.OB



DEEP OPPORTUNITY

www.erhc.com



www.erhc.com